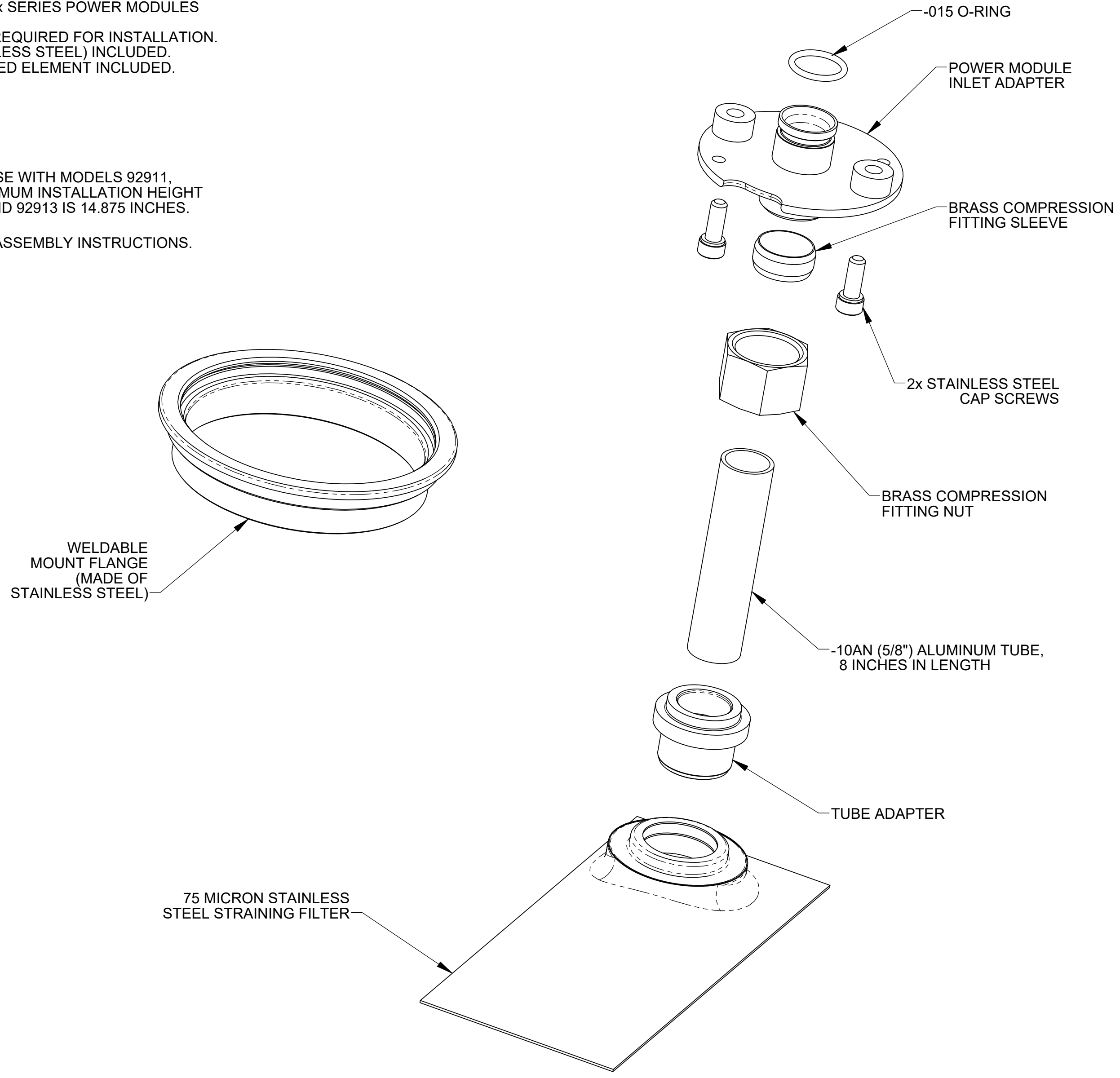

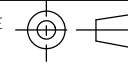


NOTES:

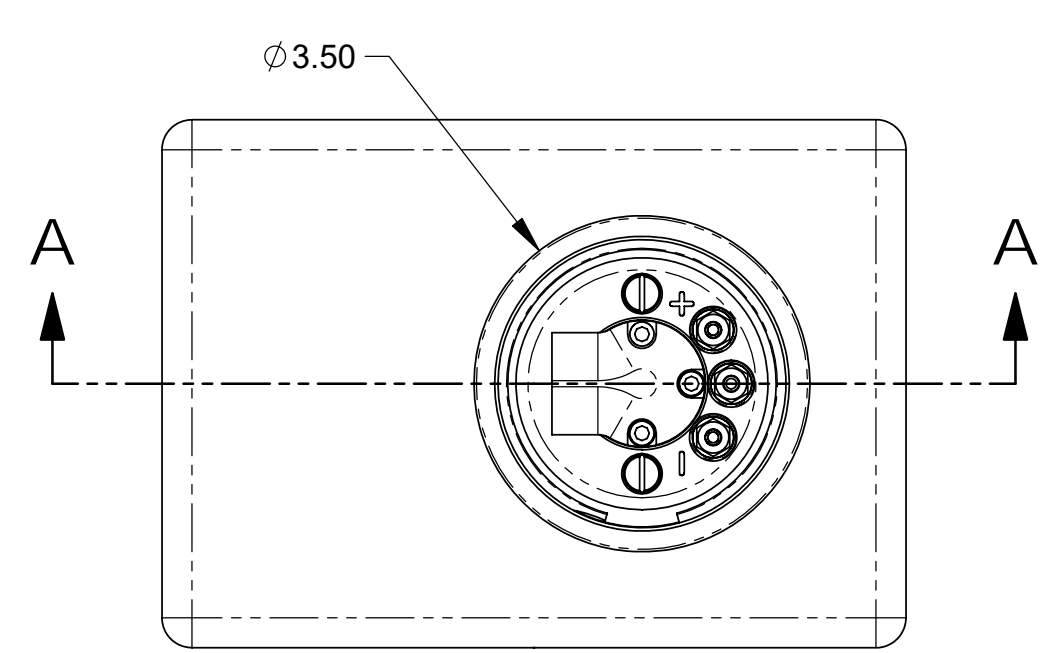
1. THIS DRAWING DESCRIBES THE FUELAB MODEL 20903 FABRICATOR INSTALLATION KIT.
2. FEATURES INCLUDE:
 - FOR USE WITH 909xx, 919xx AND 929xx SERIES POWER MODULES (NOT INCLUDED).
 - METAL FABRICATION AND WELDING REQUIRED FOR INSTALLATION.
 - MOUNTING FLANGE (MADE OF STAINLESS STEEL) INCLUDED.
 - STAINLESS STEEL 75 μ RELATIVE RATED ELEMENT INCLUDED.
3. FUEL COMPATIBILITY INCLUDES:
 - GASOLINE (PUMP OR RACE)
 - METHANOL
 - ETHANOL (INCLUDING E85)
 - DIESEL
4. MINIMUM INSTALLATION HEIGHT FOR USE WITH MODELS 92911, 92912 AND 92913 IS 8.000 INCHES. MAXIMUM INSTALLATION HEIGHT FOR USE WITH MODELS 92911, 92912 AND 92913 IS 14.875 INCHES.
5. REFERENCE DRAWING 1490201A1 FOR ASSEMBLY INSTRUCTIONS.



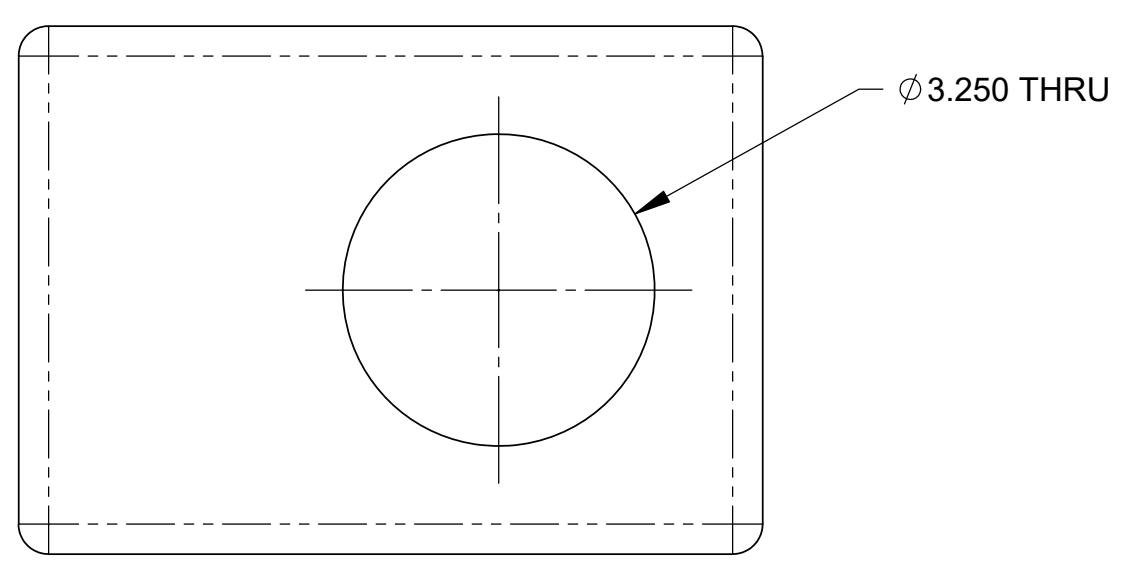
CONTENTS OF INSTALLATION KIT SHOWN ABOVE

UNLESS OTHERWISE SPECIFIED:		 COLLINSVILLE, ILLINOIS	
INTERPRET DWG PER ANSI Y14.5 DIMENSIONS ARE IN INCHES TOLERANCES: FRACTIONAL: ±1/64" ANGULAR: ±1/2° DECIMALS: X±1 .XX±.03 .XXX±.010 SURFACE FINISH: 128 ✓ OR BETTER BREAK ALL SHARP EDGES .010 MAX REMOVE ALL BURRS		TITLE: INSTALLATION KIT, MODEL 20903	
THIRD ANGLE PROJECTION 	SIZE C	DWG. NO. 149020300	REV A
DO NOT SCALE DRAWING		SCALE: 1/1	WEIGHT: .95 LB SHEET: 1 OF 2

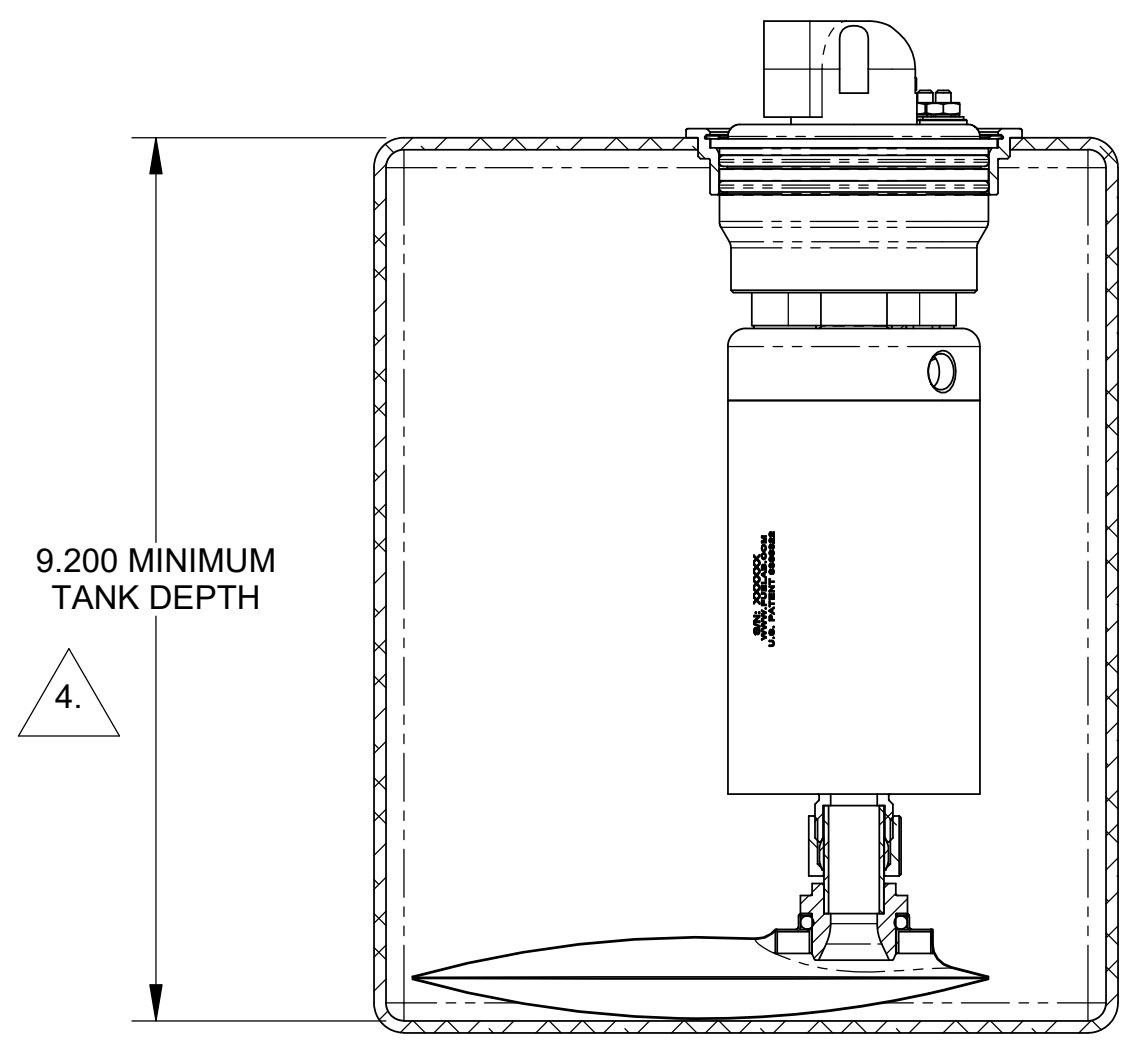
8 7 6 5 4 3 2 1



SCALE: 1/2

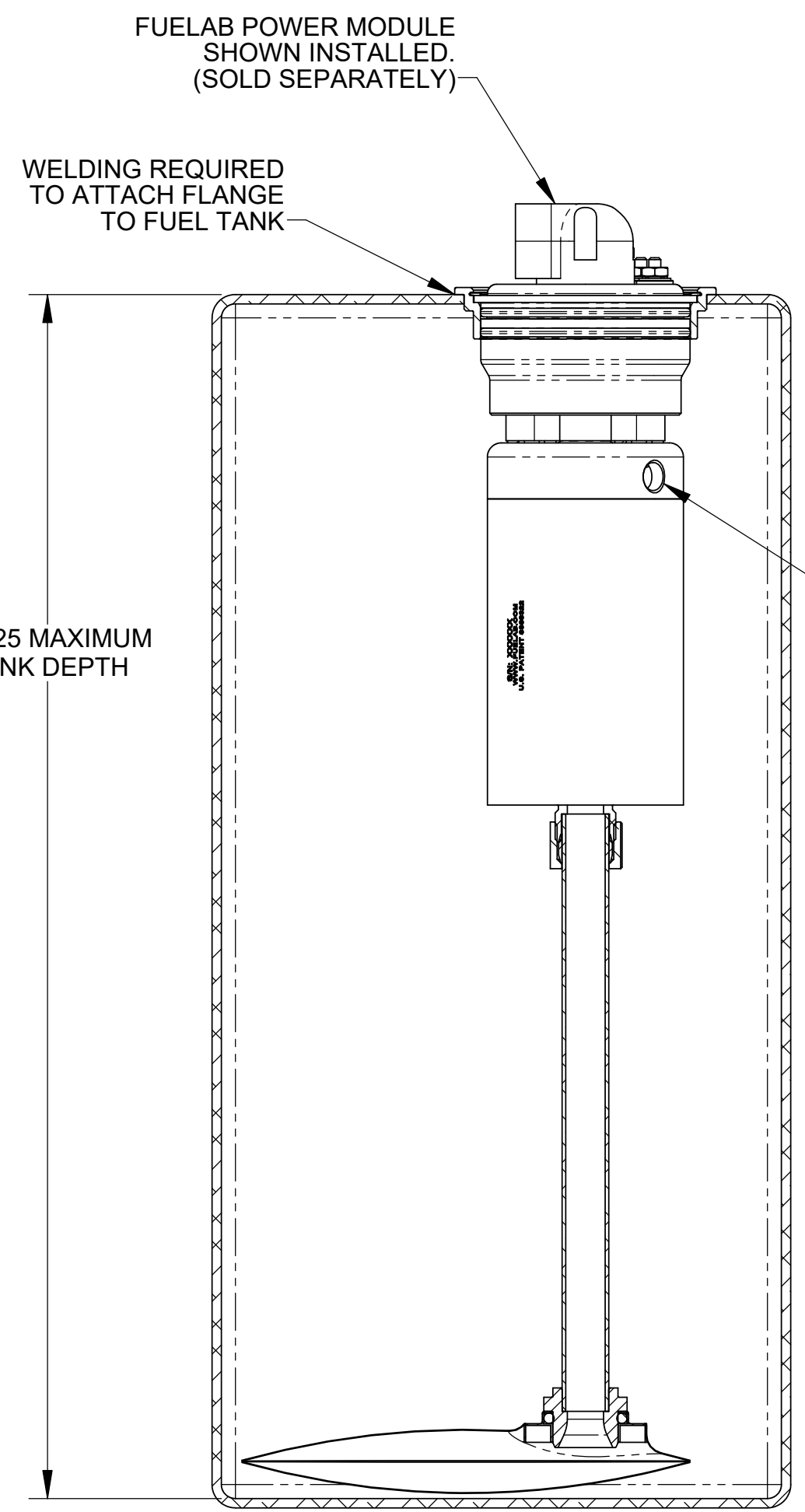


TANK FABRICATION REQUIREMENT
SHOWN ABOVE
SCALE: 1/2



SECTION A-A
MINIMUM INSTALLATION HEIGHT
SHOWN ABOVE
SCALE: 1/2

9.200 MINIMUM
TANK DEPTH



SECTION A-A
MAXIMUM INSTALLATION HEIGHT
SHOWN ABOVE
SCALE: 1/2

16.125 MAXIMUM
TANK DEPTH



2X OUTLET PORT FOR OPTIONAL
EXTERNAL EDUCATOR (JET) PUMP.



UNLESS OTHERWISE SPECIFIED:		FUELAB DIGITAL FUEL DELIVERY Collinsville, Illinois	
INTERPRET DWG PER ANSI Y14.5 DIMENSIONS ARE IN INCHES		TITLE: INSTALLATION KIT, MODEL 20903	
TOLERANCES: FRACTIONAL: ±1/64" ANGULAR: ±1/2° DECIMALS: X±1 .XX±03 .XXX±010		SIZE C	DWG. NO. 149020300
SURFACE FINISH: 128 OR BETTER BREAK ALL SHARP EDGES .010 MAX REMOVE ALL BURRS		SCALE: 1/1	WEIGHT:
THIRD ANGLE PROJECTION	DO NOT SCALE DRAWING	SHEET: 2 OF 2	REV A

8 7 6 5 4 3 2 1