

NOTES:

- THIS DRAWING DESCRIBES THE FUELAB 529xx SERIES ELECTRONIC FUEL PRESSURE REGULATOR.
- FEATURES INCLUDE:
 - COMPATIBLE WITH FUELAB PUMP MODELS 41401, 41402, 41403, 42401, 42402 AND 10302 ONLY.
 - ONE -8AN INLET PORT, WITH FITTING (ON LEFT SIDE OF REGULATOR, AVAILABLE IN -6AN OR -8AN). FITTING IS INCLUDED AND INSTALLED.
 - ONE -8AN RETURN PORT, WITH RELIEF FITTING (ON RIGHT SIDE OF REGULATOR, AVAILABLE IN -6AN OR -8AN). FITTING IS INCLUDED AND INSTALLED.
 - ADDITIONAL 0-5 VOLT ANALOG OUTPUT, TO MONITOR OR RECORD PUMP CAPACITY.
 - BILLET ALUMINUM, STAINLESS STEEL CONSTRUCTION WITH FLUOROSILICONE DIAPHRAGM AND SEALS. PLUG AND FITTING ARE MADE OF UNPLATED BRASS.

- FUEL COMPATIBILITY INCLUDES:
 - GASOLINE (PUMP OR RACE)
 - METHANOL
 - ETHANOL (INCLUDING E85)
 - DIESEL

4. UNIQUE SERIAL NUMBER DOES NOT CONTAIN DIRECT INFORMATION IN DETERMINING MODEL NUMBER. CONTACT FUELAB FOR DETERMINATION OF MODEL NUMBER BASED ON SERIAL NUMBER.

5. BRACKET, PRESSURE ADJUSTMENT HARDWARE, BRACKET MOUNTING HARDWARE, GAUGE PORT PLUG, BARBED FITTING, MINI-CONNECTOR / WIRE HARNESS AND INSTRUCTIONS INCLUDED, BAGGED SEPARATELY FROM REGULATOR. INLET AND RETURN FITTINGS ARE INSTALLED. RETURN FITTING IS NOT A STANDARD AN UNION / REDUCER, AS IT CONTAINS ORIFACE AND RELIEF POPPET FOR PROPER VALVE OPERATION.

6. SEE TABLES BELOW FOR DETERMINATION OF DESIRED MODEL NUMBER. VALVE ONLY WORKS WITH ONE (1) OR TWO (2) PRODIGY SERIES FUEL PUMPS.

7. FOR TYPICAL EFI APPLICATIONS, PRESSURE REFERENCE PORT IS PLUMBED TO THE ENGINE'S INTAKE MANIFOLD. CHANGES IN AIR PRESSURE AT THIS PORT WILL RESULT IN A CHANGE IN FUEL PRESSURE AT A RATIO OF 1:1.

MODEL NUMBER SCHEME:

52901 - c
 c = COLOR CODE
 EFI ("E" PRESSURE RANGE) ELECTRONIC FUEL PRESSURE REGULATOR, -6AN INLET AND OUTLET

52902 - c
 c = COLOR CODE
 EFI ("E" PRESSURE RANGE) ELECTRONIC FUEL PRESSURE REGULATOR, -8AN INLET AND OUTLET

52903 - c - p
 p = PRESSURE RANGE CODE
 c = COLOR CODE
 ELECTRONIC FUEL PRESSURE REGULATOR, -6AN INLET AND OUTLET, CUSTOM PRESSURE RANGE

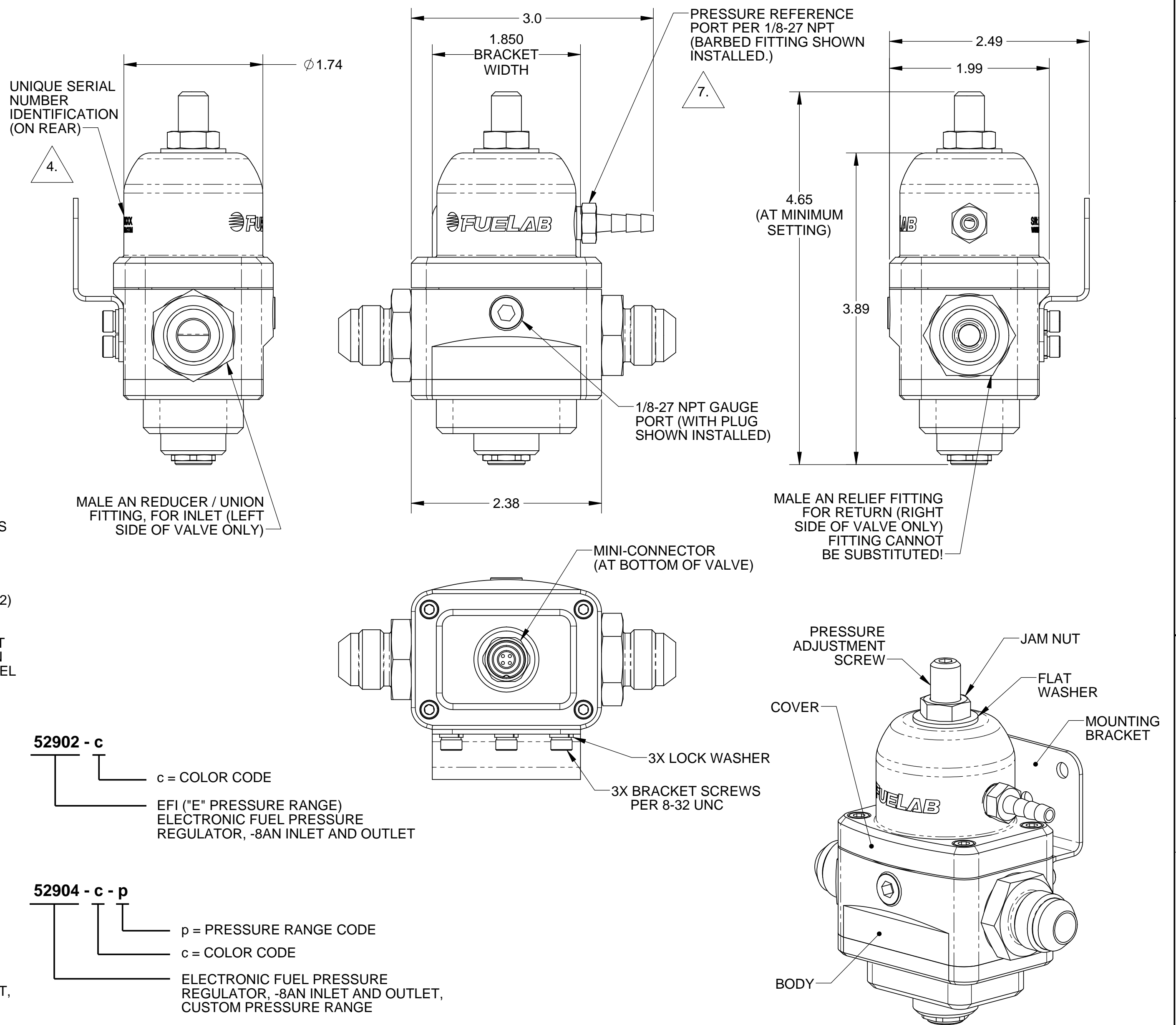
52904 - c - p
 p = PRESSURE RANGE CODE
 c = COLOR CODE
 ELECTRONIC FUEL PRESSURE REGULATOR, -8AN INLET AND OUTLET, CUSTOM PRESSURE RANGE

PRESSURE RANGE CODE, p

p	APPROX. PRESSURE RANGE	CAPACITY
T	15-25 PSID (1.0 - 1.7 BAR)	UP TO TWO PUMPS
E	25-90 PSID (1.7 - 6.2 BAR)	UP TO TWO PUMPS
G	90-125 PSID (6.2 - 8.6 BAR)	UP TO TWO PUMPS

COLOR CODE, c

c	COVER COLOR	BODY COLOR
1	BLACK	BLACK
2	RED	CLEAR
3	BLUE	CLEAR
4	PURPLE	CLEAR
5	GOLD	BLACK
6	GREEN	CLEAR



**ISOMETRIC VIEW
 (ALL VIEWS ARE SHOWN WITH
 HARDWARE INSTALLED)**

UNLESS OTHERWISE SPECIFIED:
 INTERPRET DWG PER ANSI Y14.5
 DIMENSIONS ARE IN INCHES
 TOLERANCES:
 FRACTIONAL: ±1/64"
 ANGULAR: ±1/2°
 DECIMALS:
 X±1 .XX±0.03 .XXX±0.010
 SURFACE FINISH 128 ✓ OR BETTER
 BREAK ALL SHARP EDGES .010 MAX
 REMOVE ALL BURRS

THIRD ANGLE PROJECTION

DO NOT SCALE DRAWING

FUELAB
 DIGITAL FUEL DELIVERY
 Litchfield, Illinois

TITLE:
**ELECTRONIC
 REGULATOR,
 529xx SERIES**

SIZE DWG. NO. REV
C 109020100

SCALE: 1/1 WEIGHT: SHEET: 1 OF 1