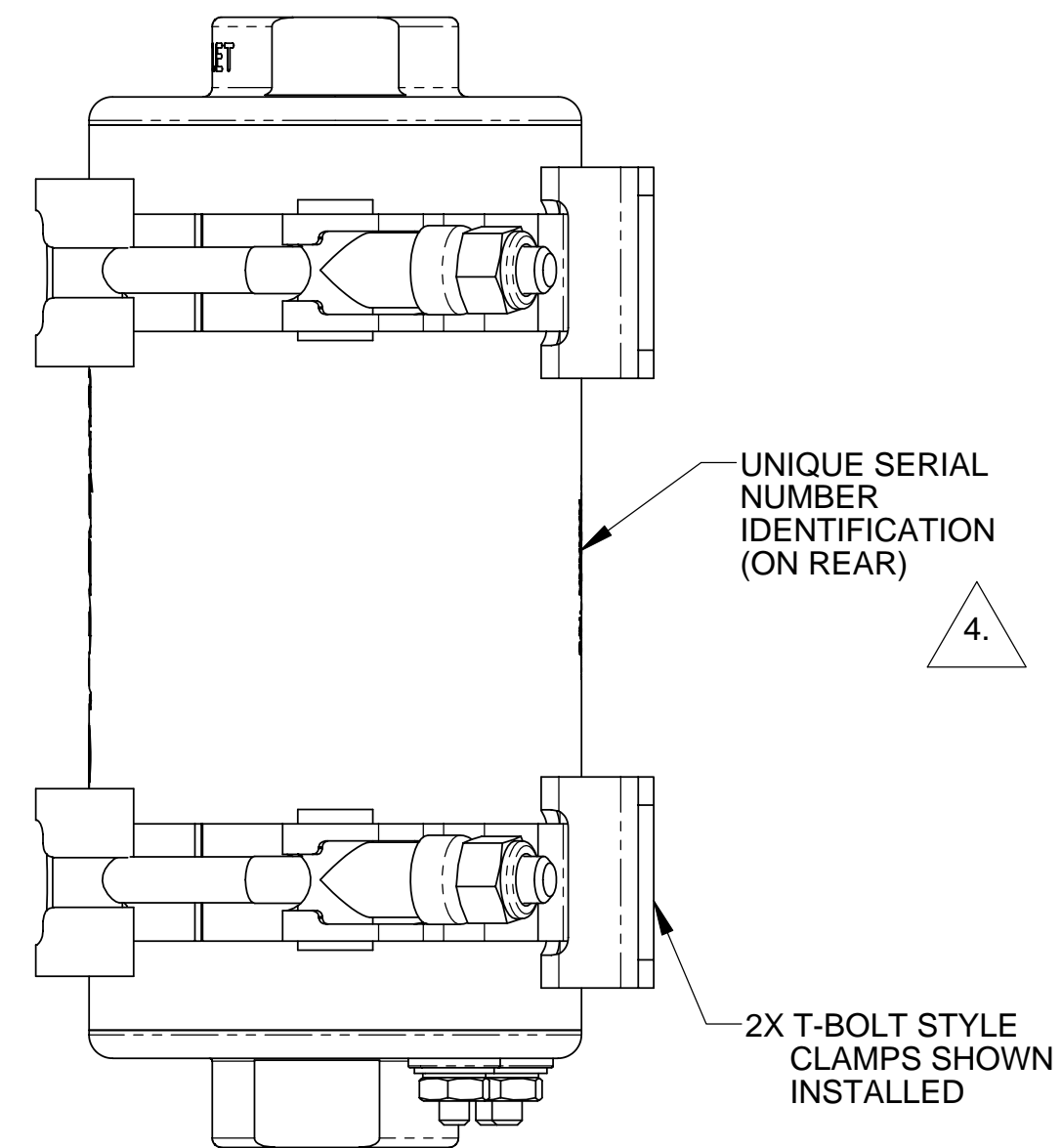
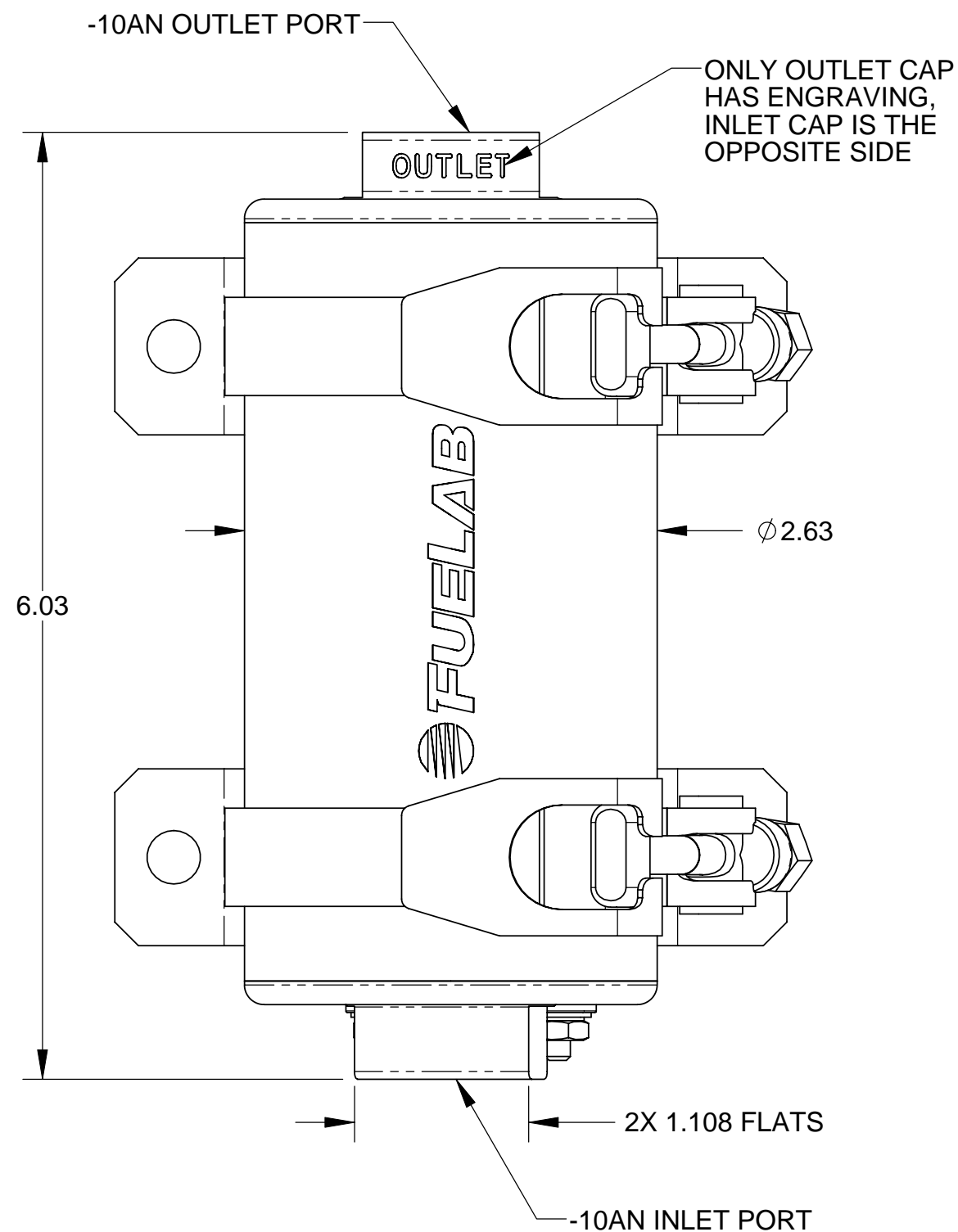


NOTES:

1. THIS DRAWING DESCRIBES THE FUELAB 404xx SERIES ELECTRONIC FUEL PUMP.
2. FEATURES INCLUDE:
 - THREE PHASE DC BRUSHLESS MOTOR WITH NEODYMIUM MAGNETS
 - INTEGRATED ELECTRONICS WITH SPEED CONTROL
 - WET MOTOR DESIGN, WITHOUT DYNAMIC SHAFT SEALS
 - BILLET ALUMINUM, STAINLESS STEEL CONSTRUCTION
 - WITH FLUOROSILICONE SEALS
 - STANDARD T-BOLT STAINLESS STEEL BRACKETS INCLUDED
3. FUEL COMPATIBILITY INCLUDES:
 - GASOLINE (PUMP OR RACE)
 - METHANOL
 - ETHANOL (INCLUDING E85)
 - DIESEL
4. UNIQUE SERIAL NUMBER DOES NOT CONTAIN DIRECT INFORMATION IN DETERMINING MODEL NUMBER. CONTACT FUELAB FOR DETERMINATION OF MODEL NUMBER BASED ON SERIAL NUMBER.
5. TWO (2) T-BOLT STAINLESS STEEL BRACKETS, O-RINGS, INSTRUCTIONS AND PERFORMANCE CERTIFICATION INCLUDED, BAGGED SERPARATELY FROM PUMP.
6. 8-18 VOLT OPERATING RANGE, USE ONLY 12 VOLT (6 CELL LEAD ACID BATTERY) VEHICLE SYSTEMS WITH OR WITHOUT CHARGING SYSTEM, OR 16 VOLT (8 CELL LEAD ACID BATTERY) VEHICLE SYSTEMS WITHOUT CHARGING SYSTEM.
7. MODEL 40402-c HAS INTERNAL BYPASS VALVE ASSEMBLY. MAXIMUM PRESSURE RATING FOR MODEL 40402-c IS A DEAD HEAD CONDITION (ZERO FLOW). MODEL 40401-c REQUIRES BYPASS REGULATOR OR RELIEF VALVE TO AVOID OVER-PRESSURE OPERATING CONDITION.
8. SEE TABLES BELOW FOR DETERMINATION OF DESIRED MODEL NUMBER

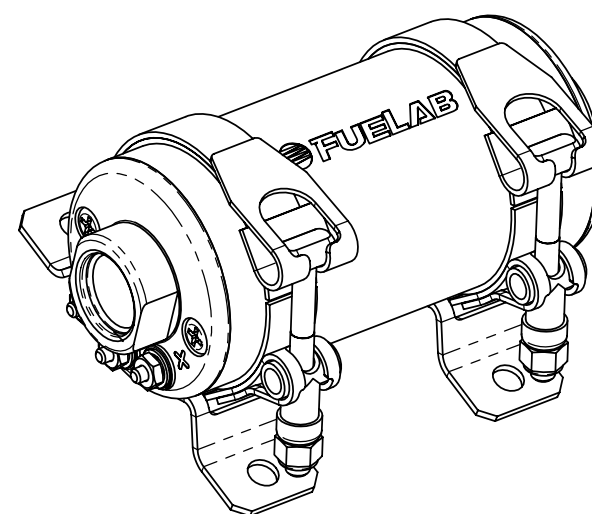


MODEL SELECTION TABLE

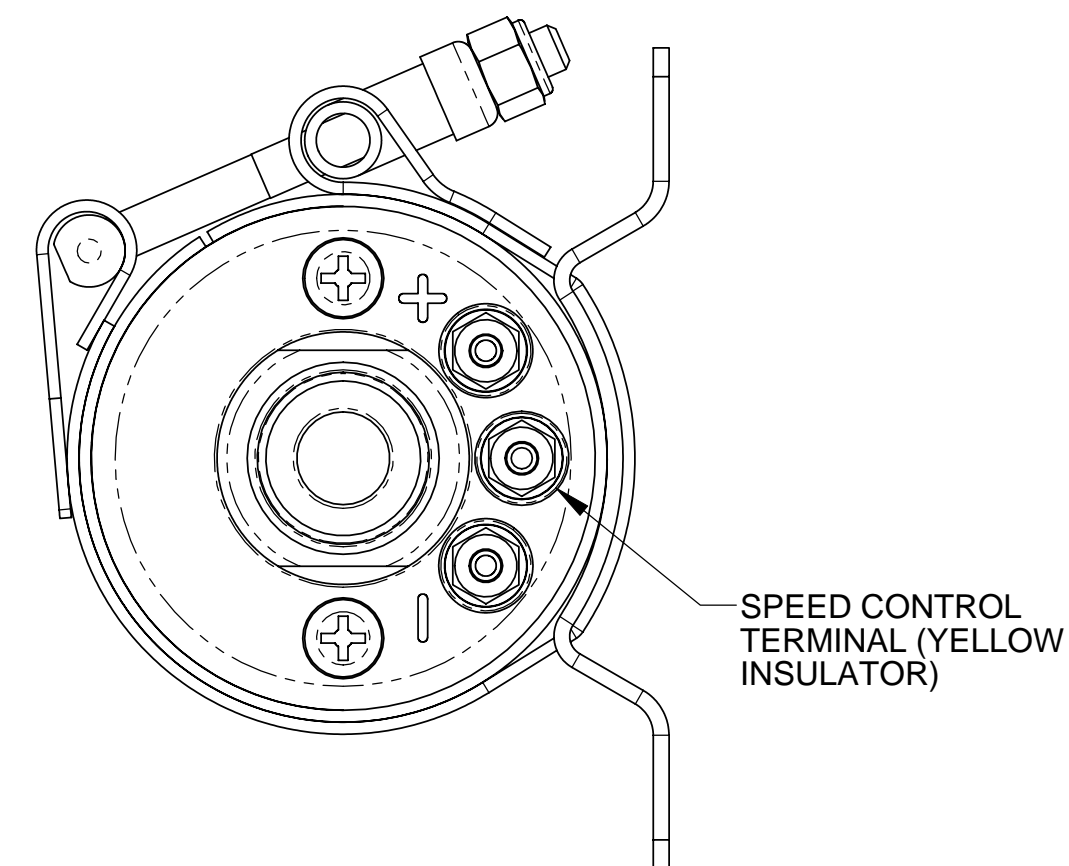
MODEL	FLOW RATING, AT 13.5v	FLOW RATING, AT 13.5v	MAX. PRESSURE
40401-c	75 GPH AT 45 PSI	280 LPH AT 3 BAR	85 PSI (5.8 BAR)
40402-c	160 GPH AT 10 PSI	600 LPH AT 0.7 BAR	35 PSI (2.4 BAR)

COLOR CODE, c

c	SLEEVE COLOR	CAPS COLOR
1	BLACK	BLACK
2	RED	CLEAR
3	BLUE	CLEAR
4	PURPLE	CLEAR
5	GOLD	BLACK
6	GREEN	CLEAR



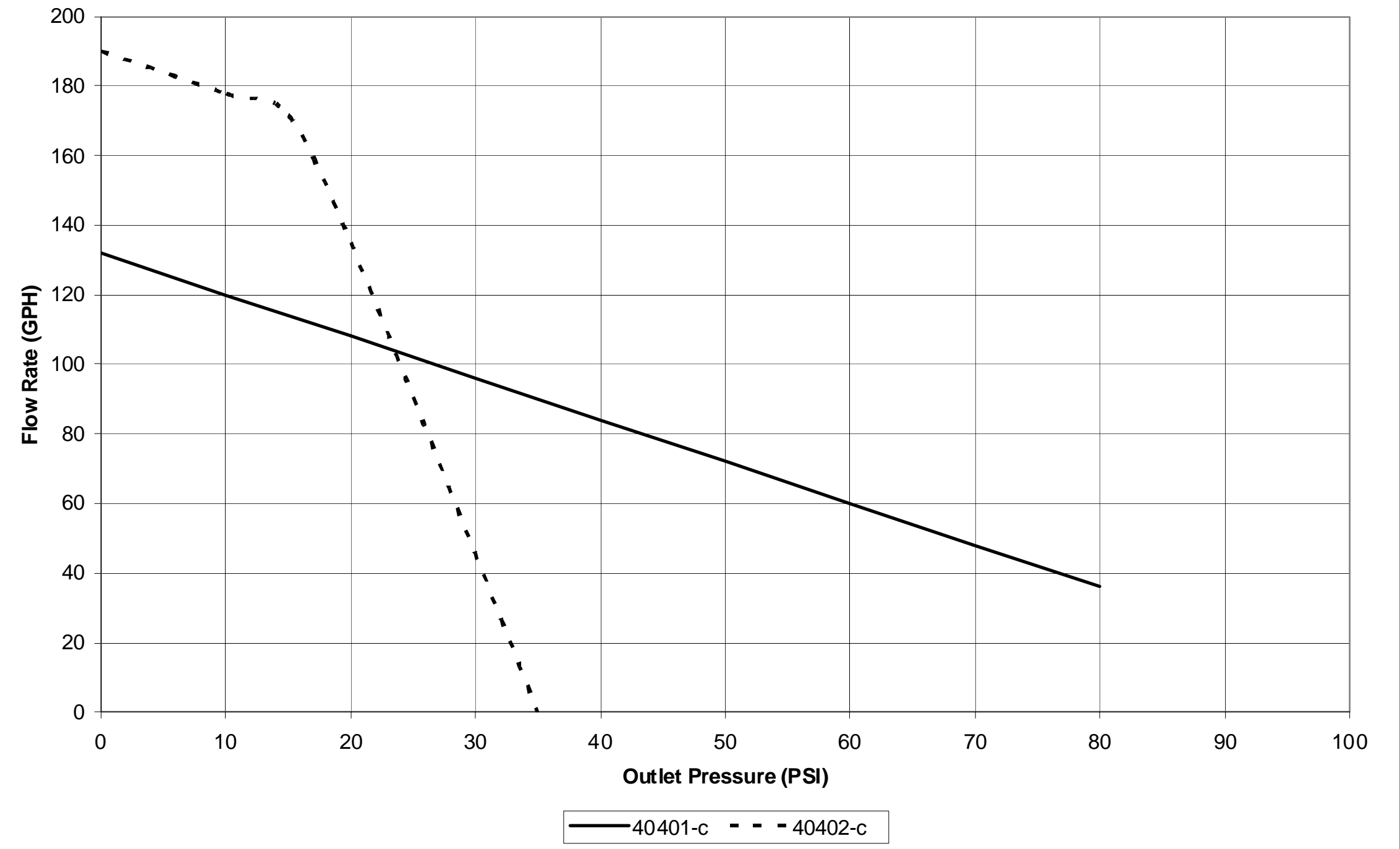
**ISOMETRIC VIEW
SCALE: 1/2**



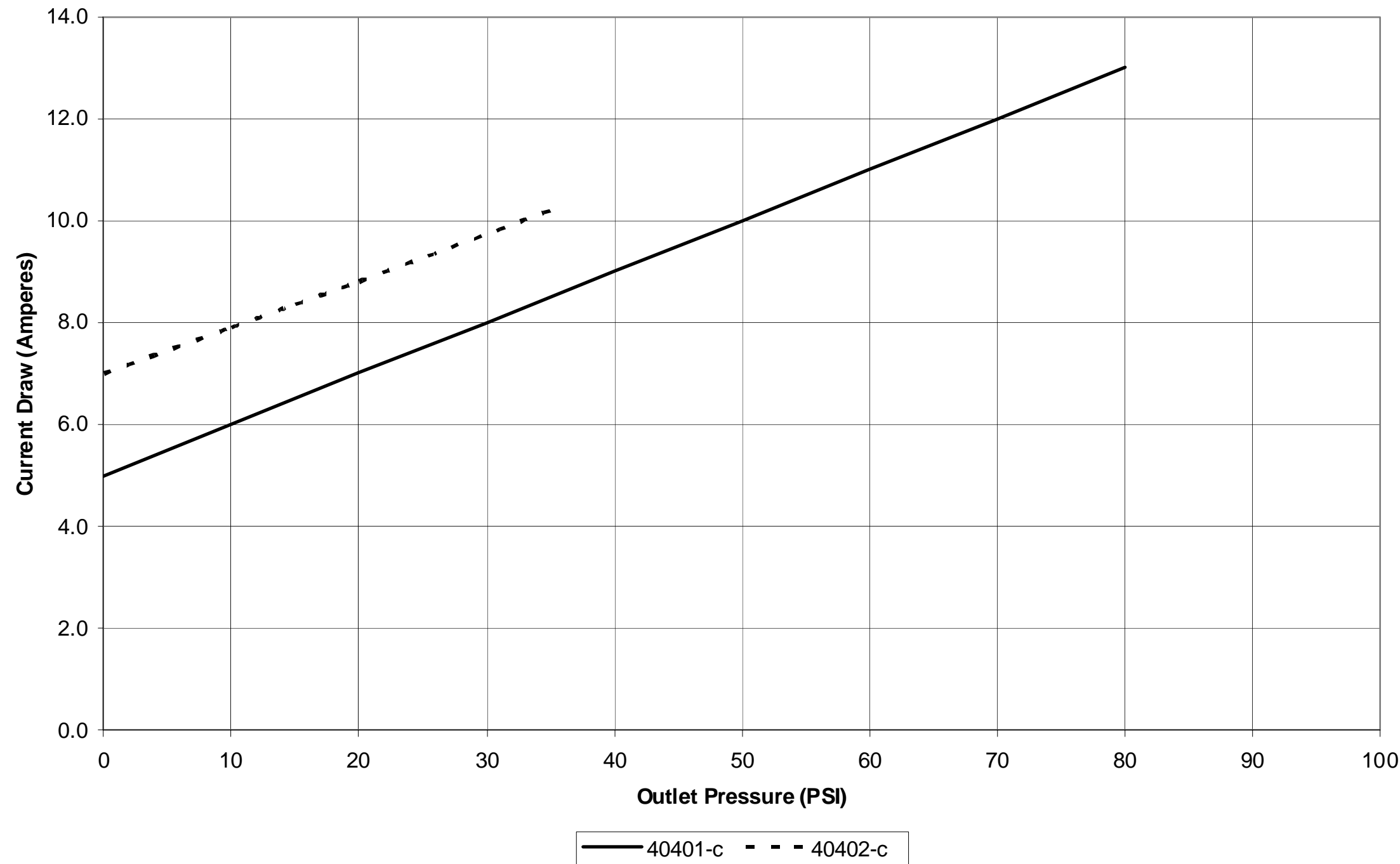
**SPEED CONTROL
TERMINAL (YELLOW
INSULATOR)**


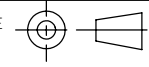
UNLESS OTHERWISE SPECIFIED: INTERPRET DWG PER ANSI Y14.5 DIMENSIONS ARE IN INCHES TOLERANCES: FRACTIONAL: ±1/64" ANGULAR: ±1/2° DECIMALS: X±1 .XX±.03 .XXX±.010 SURFACE FINISH 128 ✓ OR BETTER BREAK ALL SHARP EDGES .010 MAX REMOVE ALL BURRS		<p>FUELAB DIGITAL FUEL DELIVERY Litchfield, Illinois</p>	
TITLE: ELECTRONIC FUEL PUMP, 404xx SERIES			
SIZE C	DWG. NO. 1100201A0	REV	
SCALE: 1/1	WEIGHT:	SHEET: 1 OF 2	

Flow Performance, 404xx Series, at 13.5 Volts



Current Draw Performance, 404xx Series, at 13.5 Volts



UNLESS OTHERWISE SPECIFIED: INTERPRET DWG PER ANSI Y14.5 DIMENSIONS ARE IN INCHES TOLERANCES: FRACTIONAL: ±1/64" ANGULAR: ±1/2° DECIMALS: X±1 .XX±.03 .XXX±.010 SURFACE FINISH 128 ✓ OR BETTER BREAK ALL SHARP EDGES .010 MAX REMOVE ALL BURRS		 <i>Litchfield, Illinois</i>	
THIRD ANGLE PROJECTION 		TITLE: ELECTRONIC FUEL PUMP, 404xx SERIES	
SIZE C	DWG. NO. 1100201A0	REV	
SCALE: 1/1	WEIGHT:	SHEET: 2 OF 2	