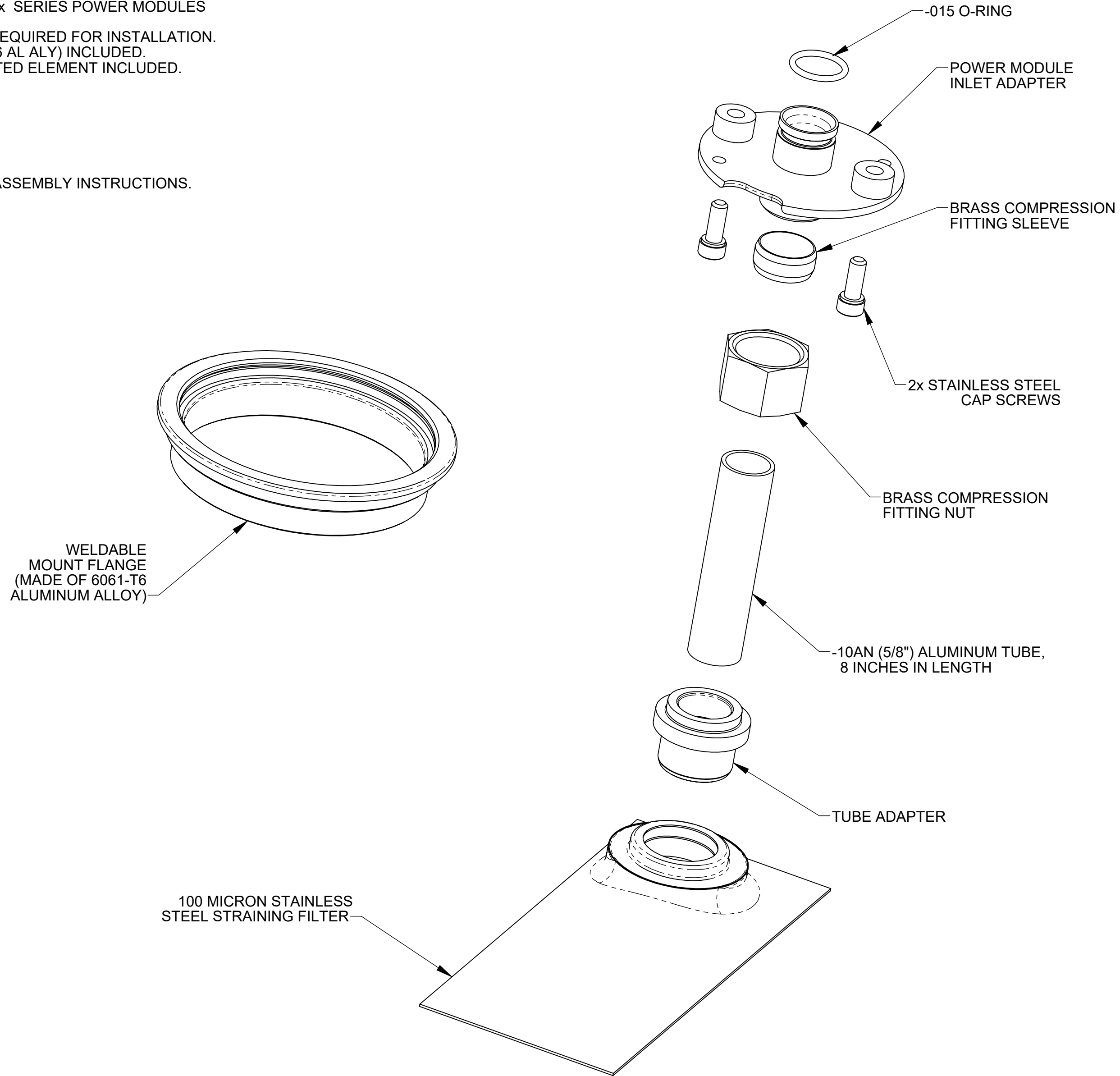




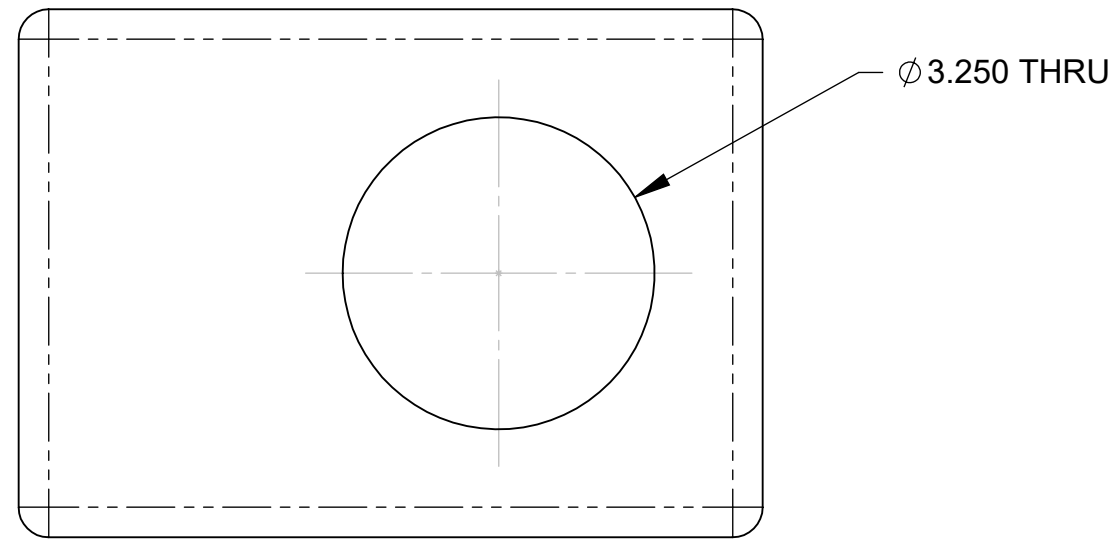
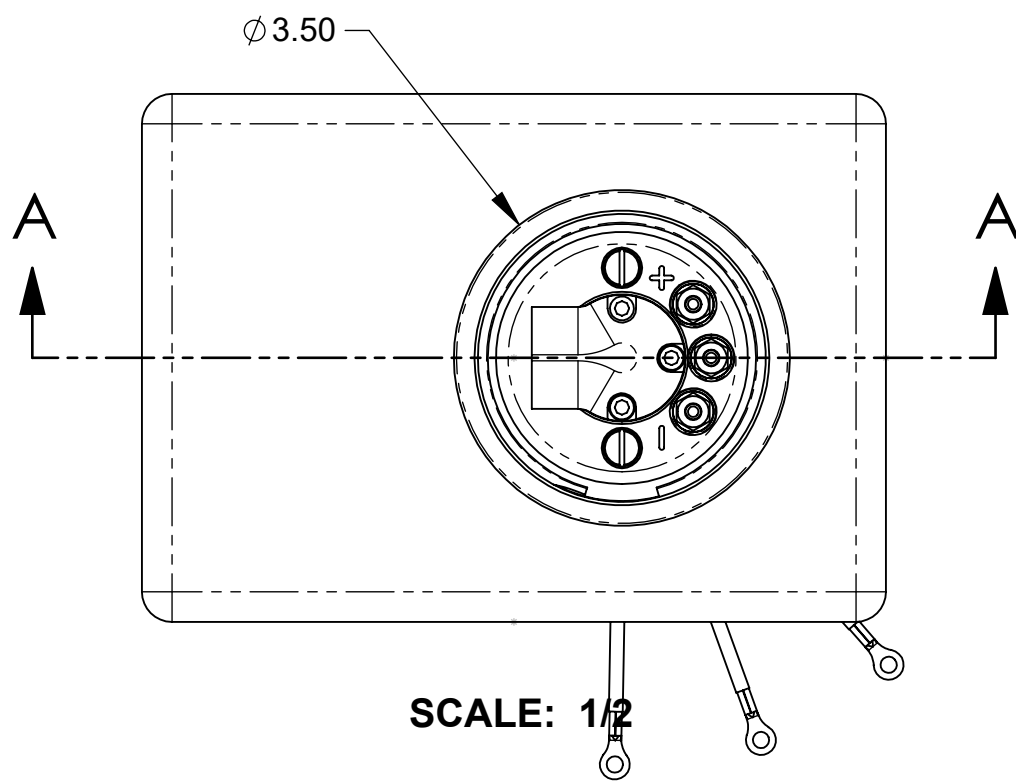
**NOTES:**

1. THIS DRAWING DESCRIBES THE FUELAB MODEL 20902 FABRICATOR INSTALLATION KIT.
2. FEATURES INCLUDE:
  - FOR USE WITH 909xx, 919xx AND 929xx SERIES POWER MODULES (NOT INCLUDED).
  - METAL FABRICATION AND WELDING REQUIRED FOR INSTALLATION.
  - MOUNTING FLANGE (MADE OF 6061-T6 AL ALY) INCLUDED.
  - STAINLESS STEEL 100μ RELATIVE RATED ELEMENT INCLUDED.
3. FUEL COMPATIBILITY INCLUDES:
  - GASOLINE (PUMP OR RACE)
  - METHANOL
  - ETHANOL (INCLUDING E85)
  - DIESEL
4. REFERENCE DRAWING 1490201A1 FOR ASSEMBLY INSTRUCTIONS.

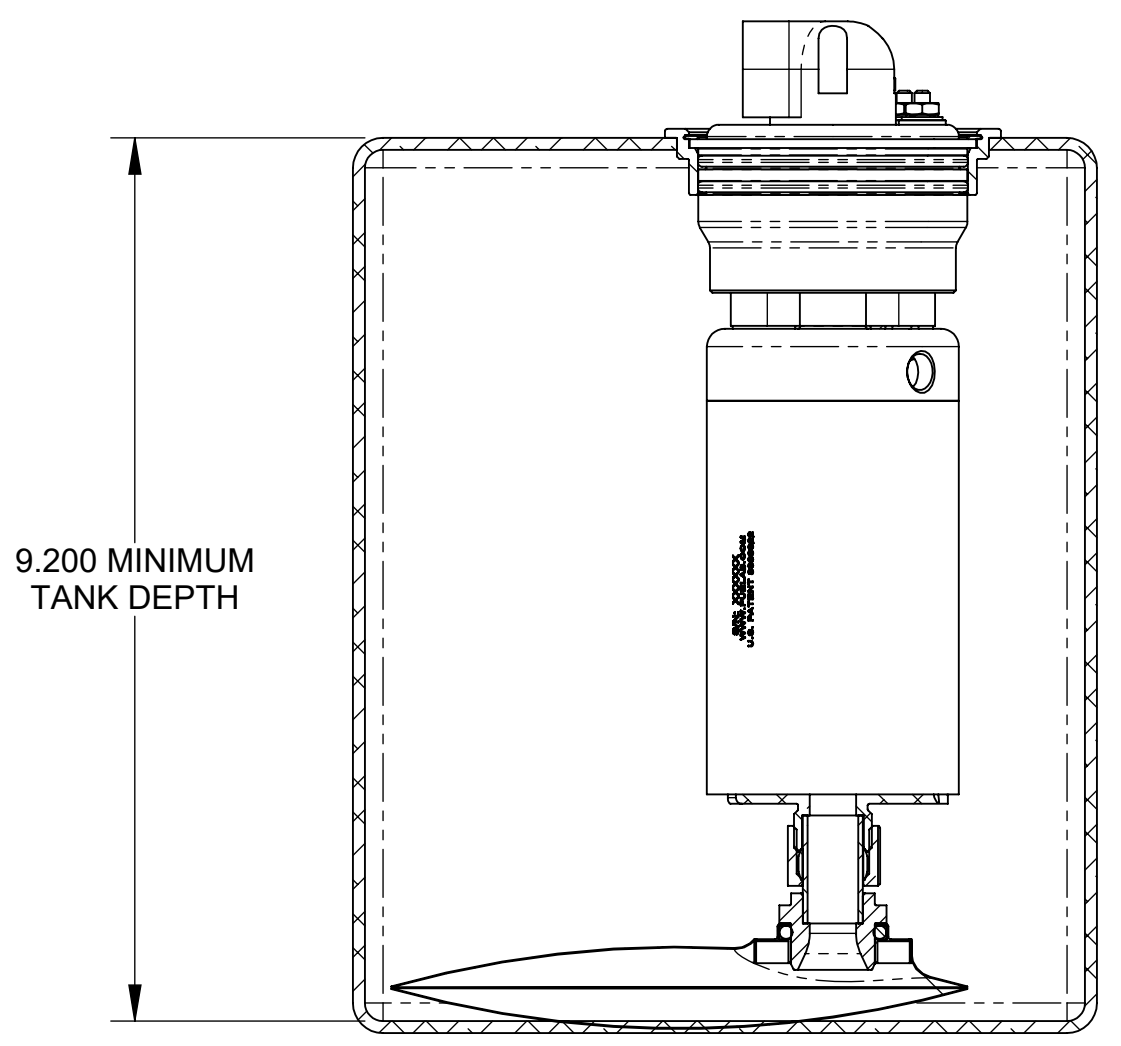


**CONTENTS OF INSTALLATION KIT SHOWN ABOVE**

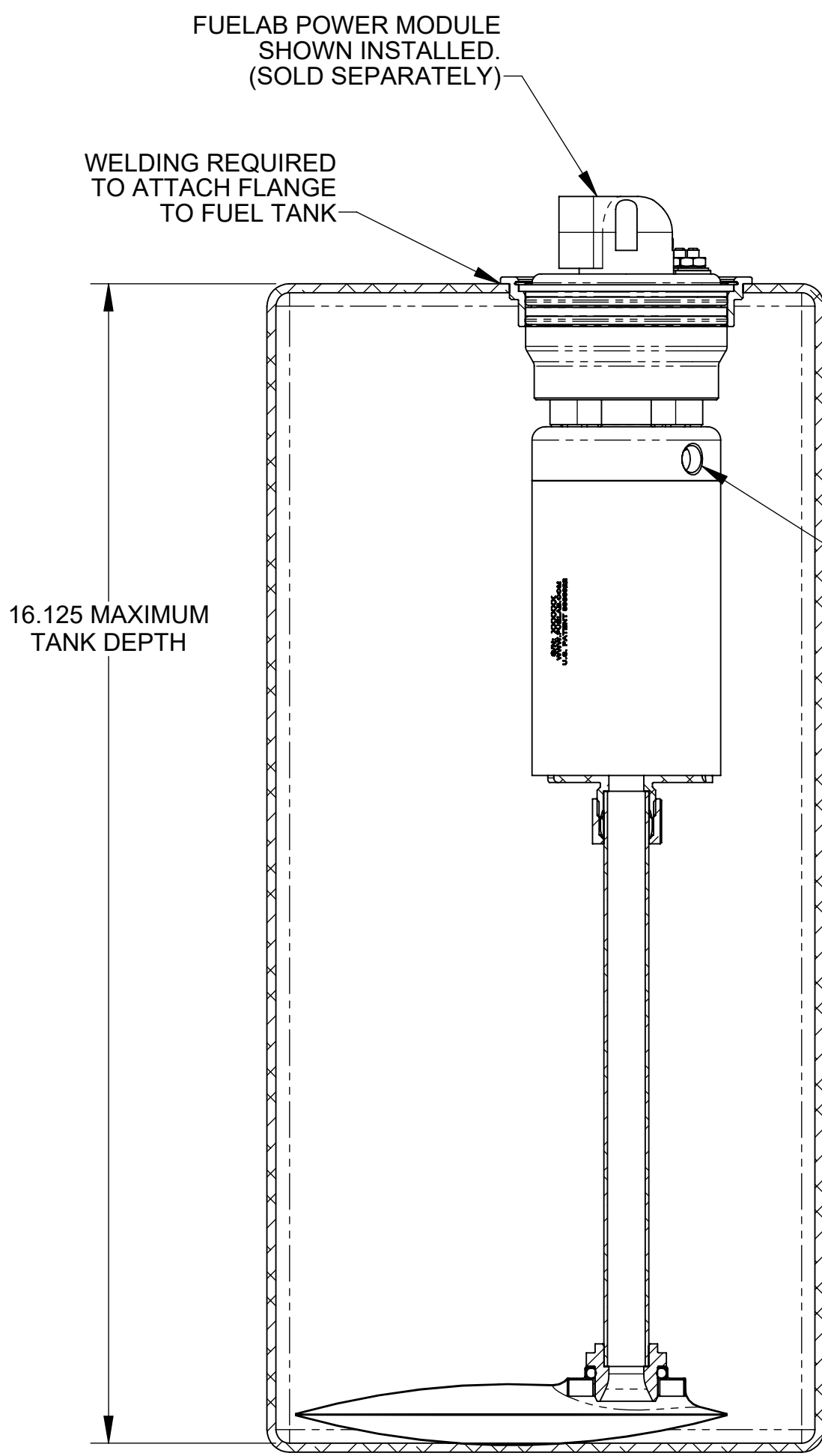
UNLESS OTHERWISE SPECIFIED:		 COLLINSVILLE, ILLINOIS	
INTERPRET DWG PER ANSI Y14.5 DIMENSIONS ARE IN INCHES TOLERANCES: FRACTIONAL: ± 1/64" ANGULAR: ± 1/2° DECIMALS: .X ± .1 .XX ± .03 .XXX ± .010 SURFACE FINISH 128 ✓ OR BETTER BREAK ALL SHARP EDGES .010 MAX REMOVE ALL BURRS		TITLE: <b>INSTALLATION KIT,                  MODEL 20902</b>	
SIZE <b>C</b>	DWG. NO. <b>149020200</b>	REV <b>C</b>	SCALE: 1/1 WEIGHT: .95 LB SHEET: 1 OF 2
THIRD ANGLE PROJECTION 		DO NOT SCALE DRAWING	




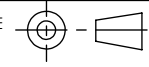
**TANK FABRICATION REQUIREMENT  
SHOWN ABOVE  
SCALE: 1/2**



**SECTION A-A  
MINIMUM INSTALLATION HEIGHT  
SHOWN ABOVE  
SCALE: 1/2**



**SECTION A-A  
MAXIMUM INSTALLATION HEIGHT  
SHOWN ABOVE  
SCALE: 1/2**

UNLESS OTHERWISE SPECIFIED:		 COLLINSVILLE, ILLINOIS	
INTERPRET DWG PER ANSI Y14.5 DIMENSIONS ARE IN INCHES TOLERANCES: FRACTIONAL: ± 1/64" ANGULAR: ± 1/2° DECIMALS: X ± .1   .XX ± .03   .XXX ± .010 SURFACE FINISH: 128 ✓ OR BETTER BREAK ALL SHARP EDGES .010 MAX REMOVE ALL BURRS			
TITLE: <b>INSTALLATION KIT,          MODEL 20902</b>		SIZE <b>C</b>	DWG. NO. <b>149020200</b>
THIRD ANGLE PROJECTION 		REV <b>C</b>	SCALE: 1/1   WEIGHT:   SHEET: 2 OF 2
<b>DO NOT SCALE DRAWING</b>			