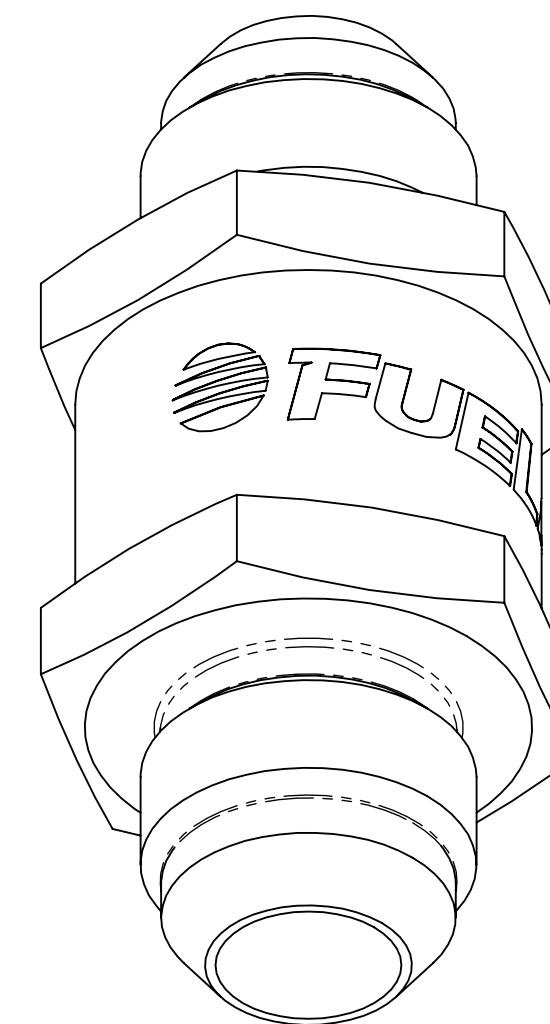
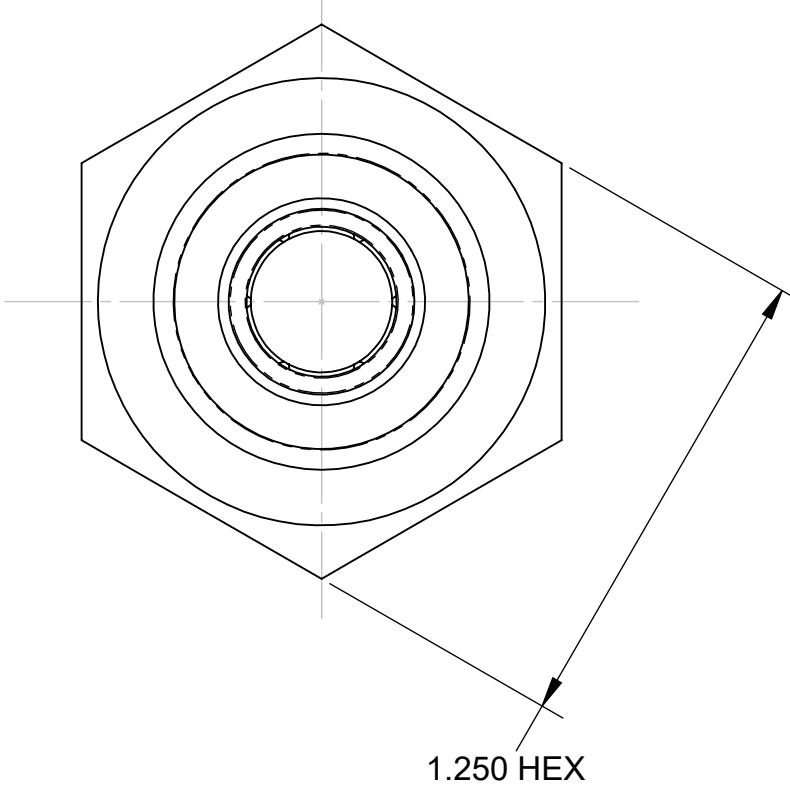


**NOTES:**

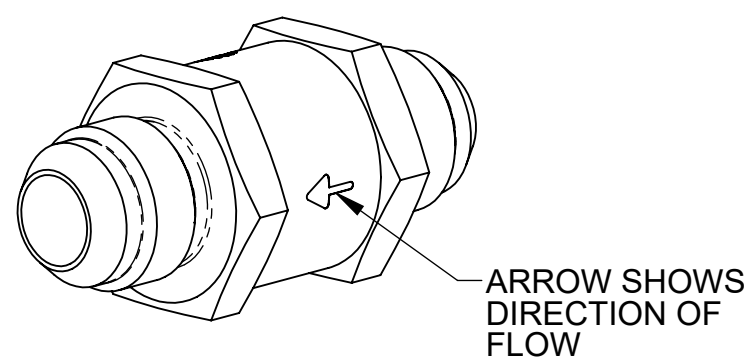
- THIS DRAWING DESCRIBES THE FUELAB 71702, 71703 AND 71704 FUEL CHECK VALVES.
- FEATURES INCLUDE:
  - FLOW CAPACITY: 350 GPH
  - MAXIMUM PRESSURE: 200 PSIG
  - 11/16" POPPET
  - BILLET ALUMINUM CONSTRUCTION
  - FLUROSILICONE SEAT AND SEALS
  - REBUILDABLE CONSTRUCTION
  - CRACKING PRESSURE: 1-2 PSI
- FUEL COMPATIBILITY INCLUDES:
  - GASOLINE (PUMP OR RACE)
  - METHANOL
  - ETHANOL
  - DIESEL

**MODEL SELECTION TABLE**

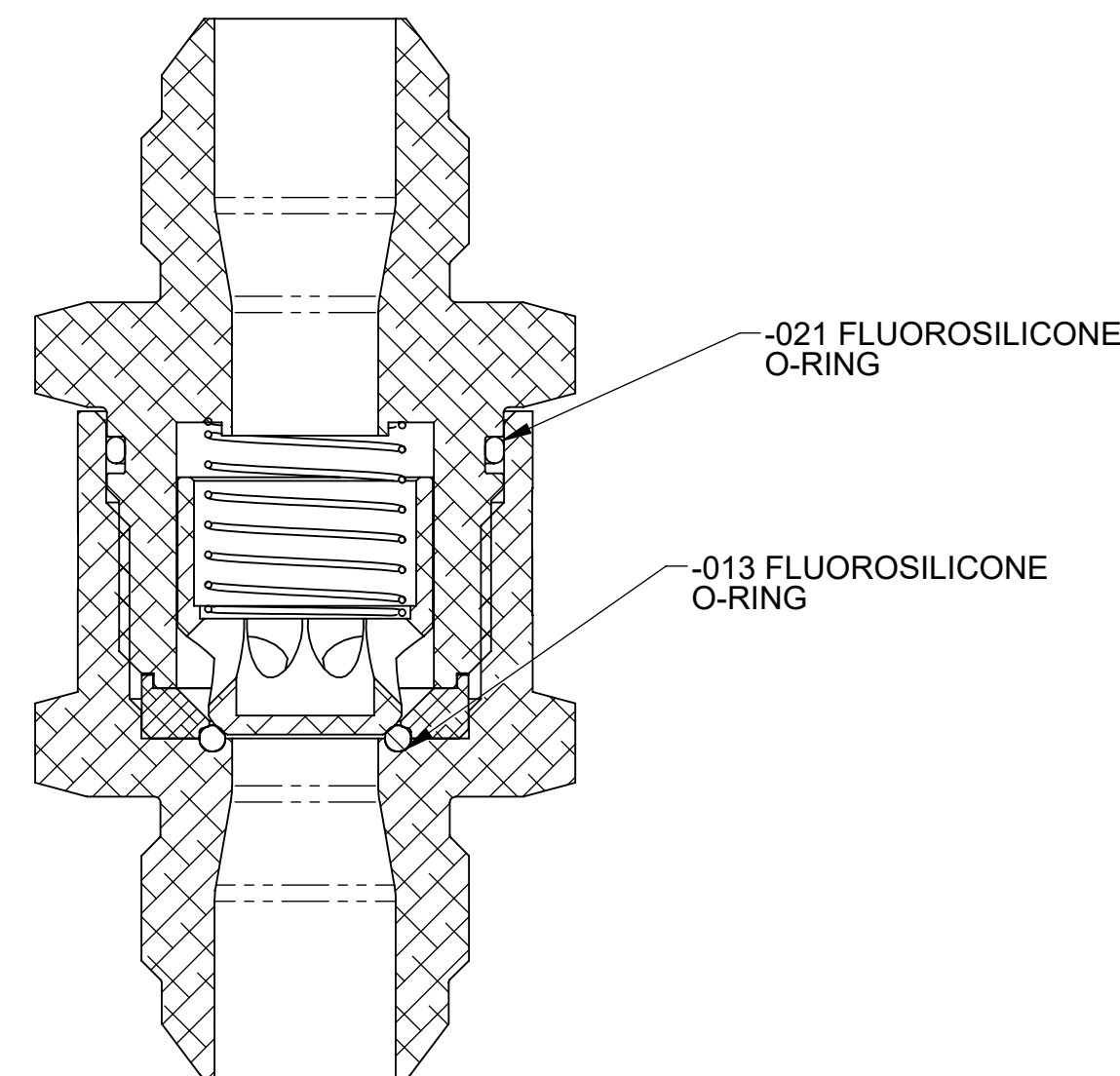
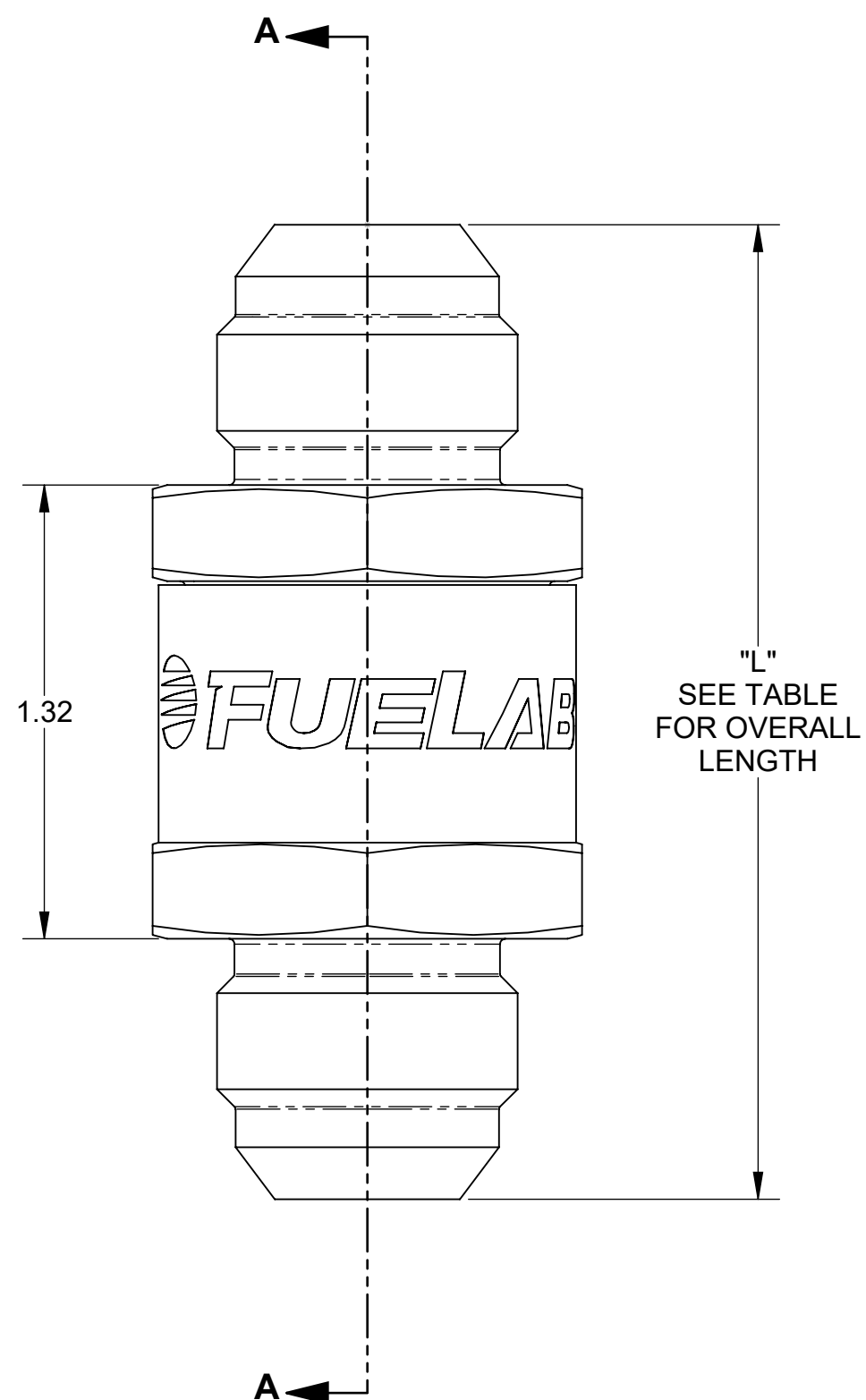
MODEL	INLET / OUTLET FITTING SIZE	OVERALL LENGTH (L)
71702	-6AN, MALE	2.49
71703	-8AN, MALE	2.64
71704	-10AN, MALE	2.84



**ISOMETRIC VIEW**


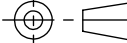


**ALTERNATE ISOMETRIC VIEW  
SCALE 1:1**



**SECTION A-A**

**MODEL 71704  
SHOWN ABOVE**

UNLESS OTHERWISE SPECIFIED:		 COLLINSVILLE, ILLINOIS	
INTERPRET DWG PER ANSI Y14.5 DIMENSIONS ARE IN INCHES TOLERANCES: FRACTIONAL: ± 1/64" ANGULAR: ± 1/2° DECIMALS: X ± .1    .XX ± .03    .XXX ± .010 SURFACE FINISH: 128 OR BETTER BREAK ALL SHARP EDGES .010 MAX REMOVE ALL BURRS		TITLE: <b>CHECK VALVE, MODELS 71702, 71703, 71704</b>	
THIRD ANGLE PROJECTION 	SIZE: <b>C</b>	DWG. NO.: <b>117020200</b>	REV: <b>A</b>
DO NOT SCALE DRAWING	SCALE: 2/1	WEIGHT:	SHEET: 1 OF 1