

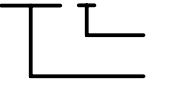




NOTES:

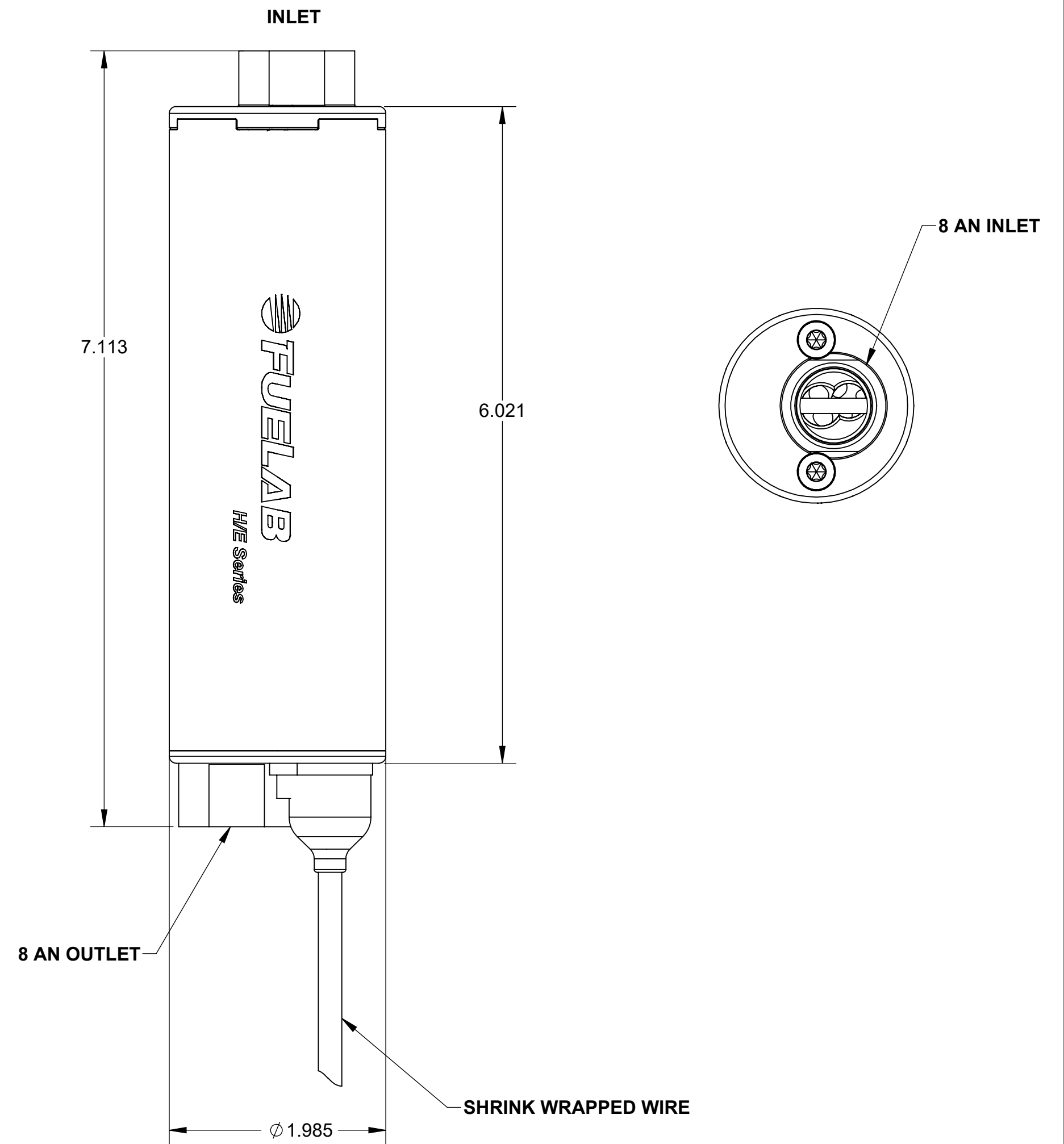
- THIS DRAWING DESCRIBES THE FUELAB 208XX SERIES IN TANK, ELECTRONIC FUEL PUMP KIT.
- FEATURES INCLUDE:
 - THREE PHASE DC BRUSHLESS SCREW STYLE PUMP
 - ELECTRONIC CONTROLLER WITH PWM AND/OR 0-5V SPEED CONTROL CAPABILITY
 - STRAINING FILTER FITTING w/ O RING
 - STRAINING FILTER
- FUEL COMPATIBILITY INCLUDES:
 - GASOLINE (PUMP OR RACE)
 - METHANOL
 - ETHANOL (INCLUDING E85)
 - DIESEL
- PORT O-RINGS, MATING ELECTRICAL CONNECTOR, AND PERFORMANCE CERTIFICATION INCLUDED, BAGGED SEPARATELY FROM PUMP.
- 9.5-22 VOLT OPERATING RANGE, USE ONLY 12 VOLT OR 16 VOLT (6 OR 8 CELL LEAD ACID BATTERY) VEHICLE SYSTEMS WITH OR WITHOUT CHARGING SYSTEM.
- ALL MODEL 208XX SERIES SYSTEMS REQUIRE BYPASS REGULATOR OR RELIEF VALVE TO AVOID OVER-PRESSURE OPERATING CONDITION.
- SEE TABLE BELOW FOR DETERMINATION OF DESIRED MODEL NUMBER.

MODEL SELECTION TABLE



MODEL	FLOW RATING, AT 13.5v	FLOW RATING, AT 13.5v	MAX. PRESSURE
20811	79 GPH AT 45 PSI	300 LPH AT 3.0 BAR	125 PSI (8.5 BAR)
20812	105 GPH AT 45 PSI	400 LPH AT 3.0 BAR	125 PSI (8.5 BAR)
20813	145 GPH AT 45 PSI	550 LPH AT 3.0 BAR	125 PSI (8.5 BAR)
20814	165 GPH AT 45 PSI	625 LPH AT 3.0 BAR	125 PSI (8.5 BAR)
20815	290 GPH AT 45 PSI	1100 LPH AT 3.0 BAR	125 PSI (8.5 BAR)

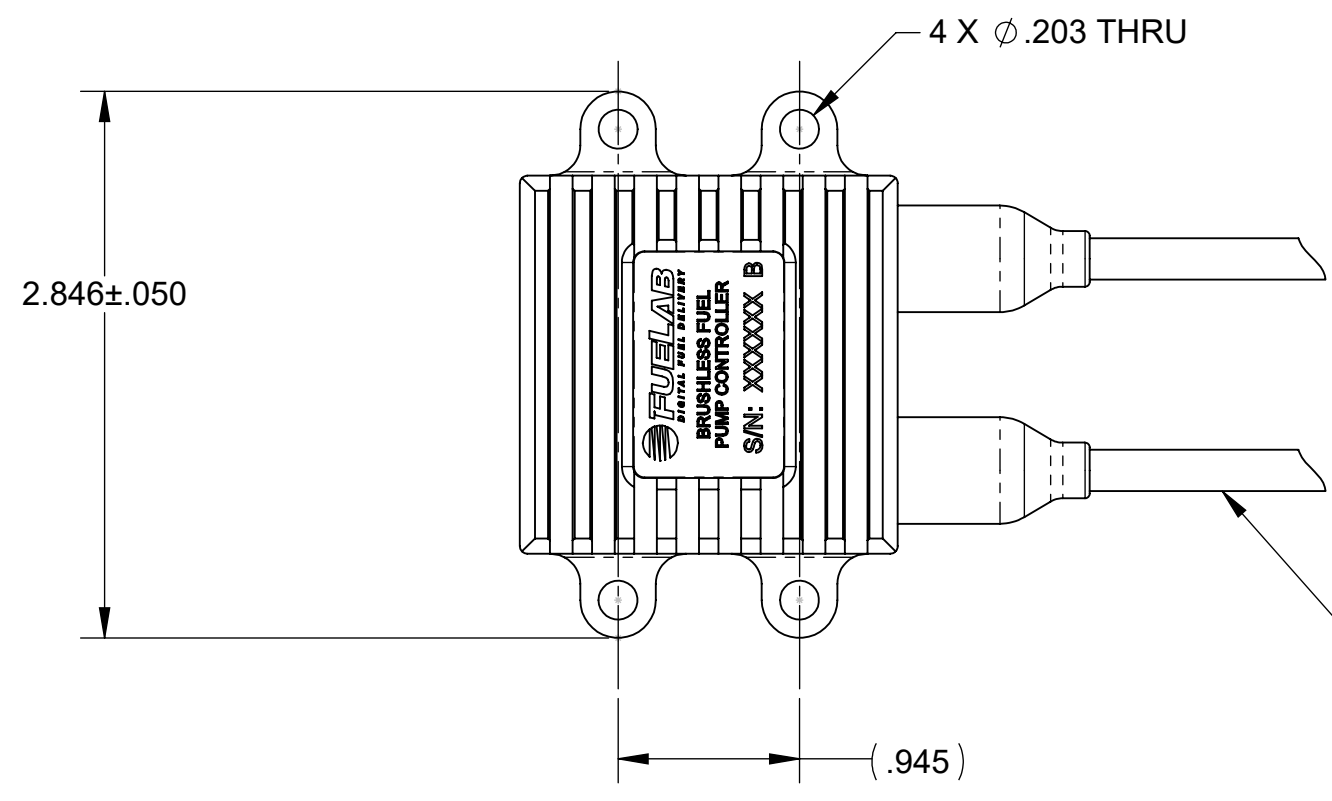
MODEL NUMBER SCHEME:

- 208 - 11**

 300 LPH FUEL PUMP W/O CANBus
 HIGH EFFICIENCY EFI IN TANK SCREW PUMP KIT
- 208 - 12**

 400 LPH FUEL PUMP W/O CANBus
 HIGH EFFICIENCY EFI IN TANK SCREW PUMP KIT
- 208 - 13**

 550 LPH FUEL PUMP W/O CANBus
 HIGH EFFICIENCY EFI IN TANK SCREW PUMP KIT
- 208 - 14**

 625 LPH FUEL PUMP W/O CANBus
 HIGH EFFICIENCY EFI IN TANK SCREW PUMP KIT
- 208 - 15**

 1100 LPH FUEL PUMP W/O CANBus
 HIGH EFFICIENCY EFI IN TANK SCREW PUMP KIT

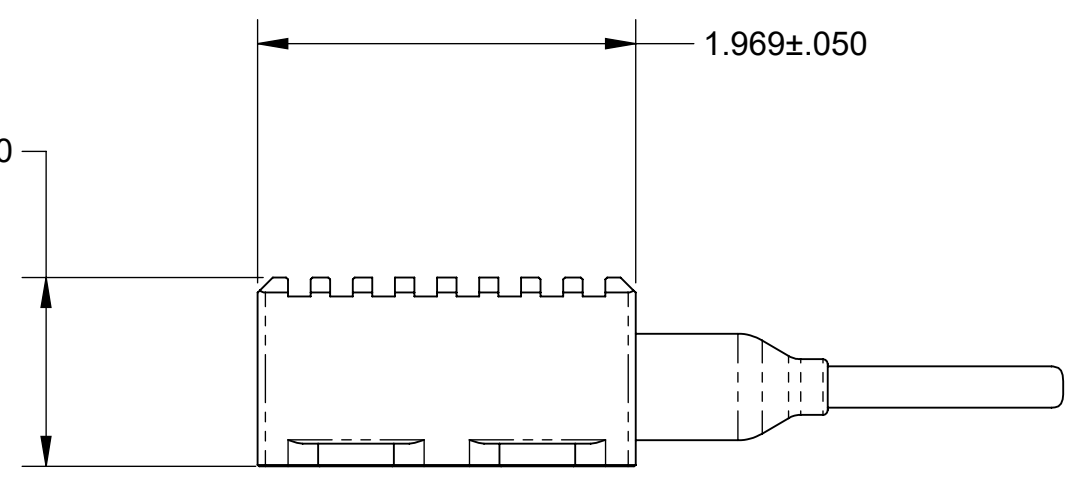


PUMP

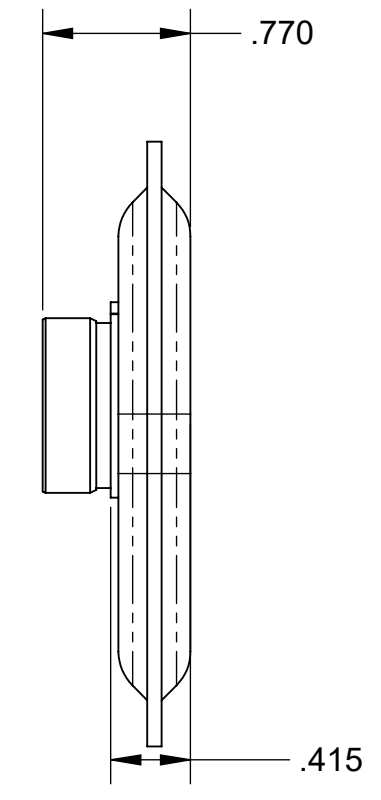
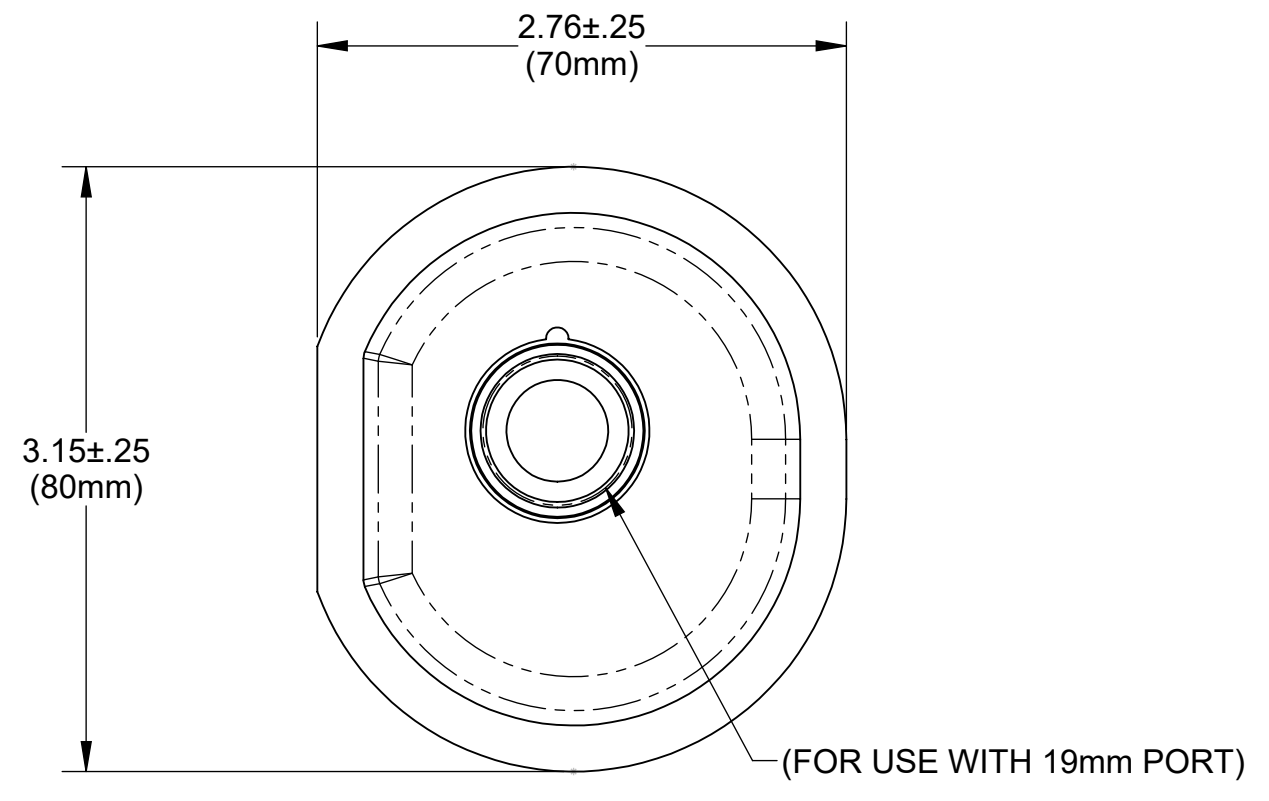
UNLESS OTHERWISE SPECIFIED:		 FUELAB DIGITAL FUEL DELIVERY Pontoon Beach, Illinois	
INTERPRET DWG PER ANSI Y14.5 DIMENSIONS ARE IN INCHES		TITLE: IN-TANK KIT, SCREW PUMP	
TOLERANCES: FRACTIONAL: ± 1/64" ANGULAR: ± 1/2° DECIMALS: X=1 .XX±.03 .XXX±.010		SIZE C	DWG. NO. 114020400
SURFACE FINISH 128 ✓ OR BETTER BREAK ALL SHARP EDGES .010 MAX REMOVE ALL BURRS		SCALE: 1/1	REV B
THIRD ANGLE PROJECTION 	DO NOT SCALE DRAWING	WEIGHT:	SHEET: 1 OF 3



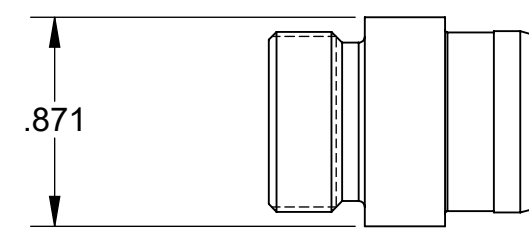
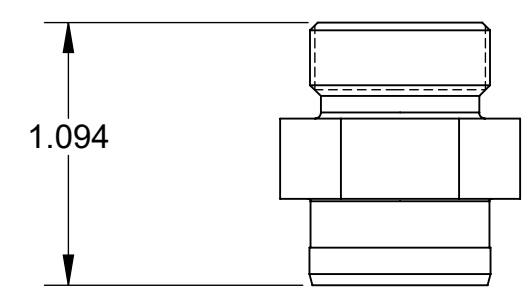
WIRE LENGTHS:
22 \pm 6 TYP
SHRINK WRAP LENGTHS:
4 \pm 2 TYP



CONTROLLER



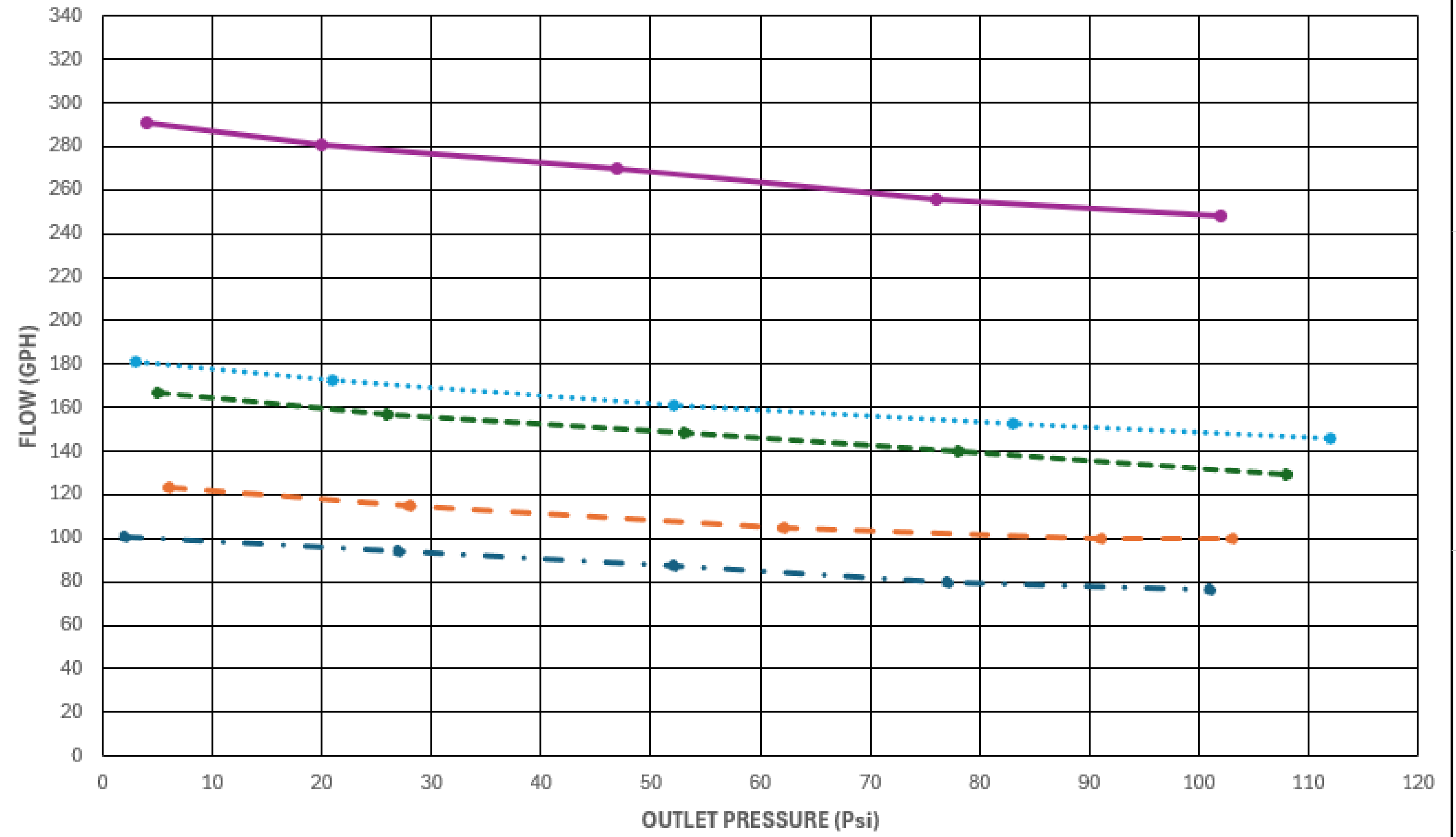
FILTER



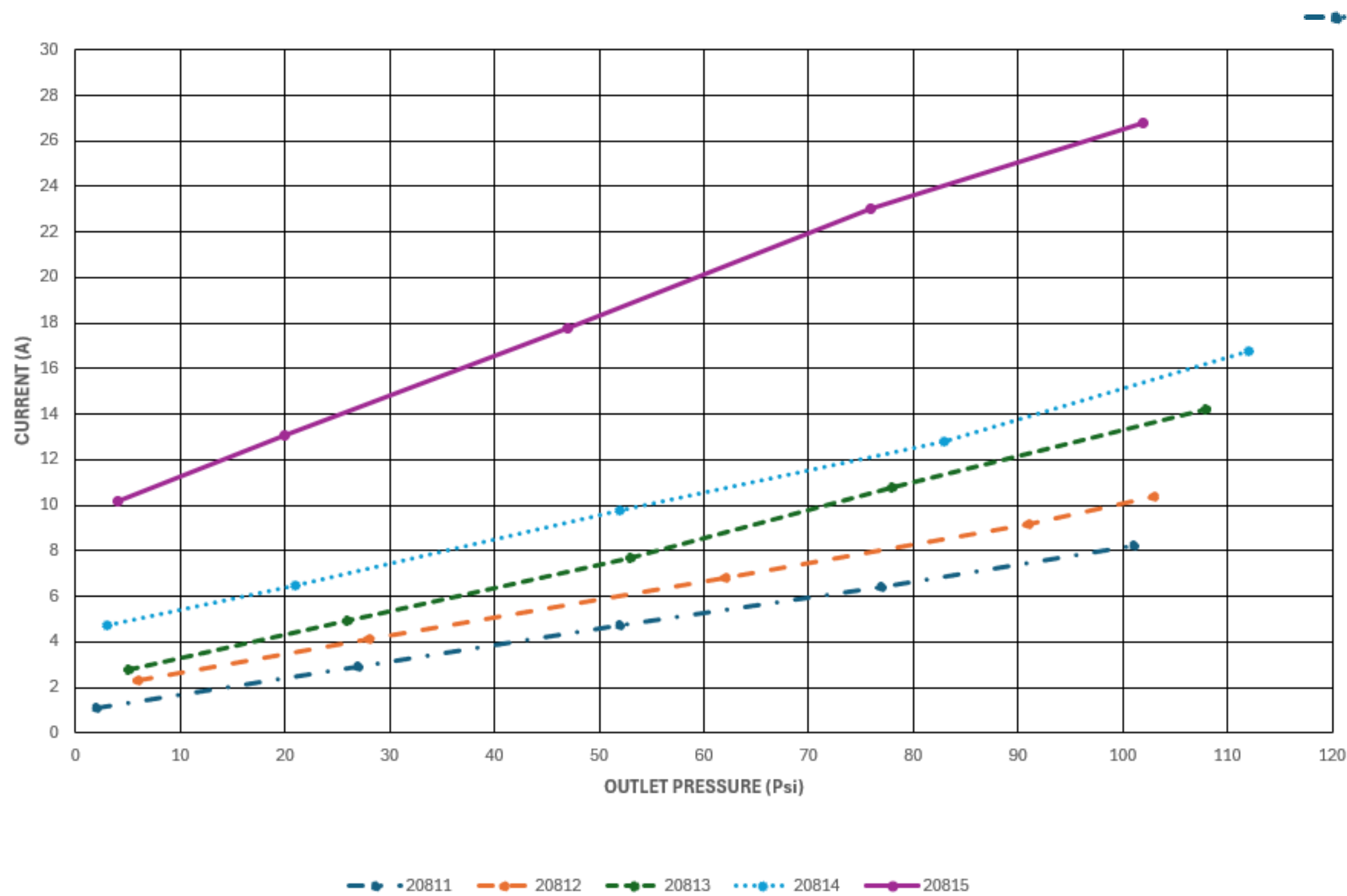
8 AN FITTINGS w/ O RING

UNLESS OTHERWISE SPECIFIED:		Pontoon Beach, Illinois	
INTERPRET DWG PER ANSI Y14.5 DIMENSIONS ARE IN INCHES TOLERANCES: FRACTIONAL: \pm 1/64" ANGULAR: \pm 1/2° DECIMALS: X+.1 .XX \pm .03 .XXX \pm .010 SURFACE FINISH $\sqrt{128}$ OR BETTER BREAK ALL SHARP EDGES .010 MAX REMOVE ALL BURRS			
TITLE: IN-TANK KIT, SCREW PUMP		SIZE C	DWG. NO. 114020400
THIRD ANGLE PROJECTION		REV B	SCALE: 1/1 WEIGHT: SHEET: 2 OF 3
DO NOT SCALE DRAWING			

Flow Performance at 13.5V



Current Performance at 13.5V



UNLESS OTHERWISE SPECIFIED:
 INTERPRET DWG PER ANSI Y14.5
 DIMENSIONS ARE IN INCHES
 TOLERANCES:
 FRACTIONAL: ±1/64"
 ANGULAR: ±1/2°
 DECIMALS:
 .X±1 .XX±.03 .XXX±.010
 SURFACE FINISH 128 ✓ OR BETTER
 BREAK ALL SHARP EDGES .010 MAX
 REMOVE ALL BURRS

THIRD ANGLE PROJECTION

DO NOT SCALE DRAWING

FUELAB
 DIGITAL FUEL DELIVERY
 Pontoon Beach, Illinois

TITLE:
**IN-TANK KIT,
 SCREW PUMP**

SIZE	DWG. NO.	REV
C	114020400	B

SCALE: 1/1 WEIGHT: SHEET: 3 OF 3