

NOTES:

1. THIS DRAWING DESCRIBES THE FUELAB 405xx SERIES DC BRUSHLESS FUEL PUMP (SPUR GEAR).
2. FEATURES INCLUDE:

- -12AN INLET AND -10AN OUTLET PORTS

- THREE PHASE DC BRUSHLESS MOTOR WITH NEODYMIUM MAGNETS

- WET MOTOR DESIGN, WITHOUT DYNAMIC SHAFT SEALS

- SPUR GEAR STYLE PUMPING MECHANISM

- INTEGRATED CONTROLLER ELECTRONICS WITH PWM SPEED CONTROL

- BILLET ALUMINUM, STAINLESS STEEL CONSTRUCTION WITH FLUOROSILICONE SEALS
3. FUEL COMPATIBILITY INCLUDES:

- GASOLINE (PUMP OR RACE)

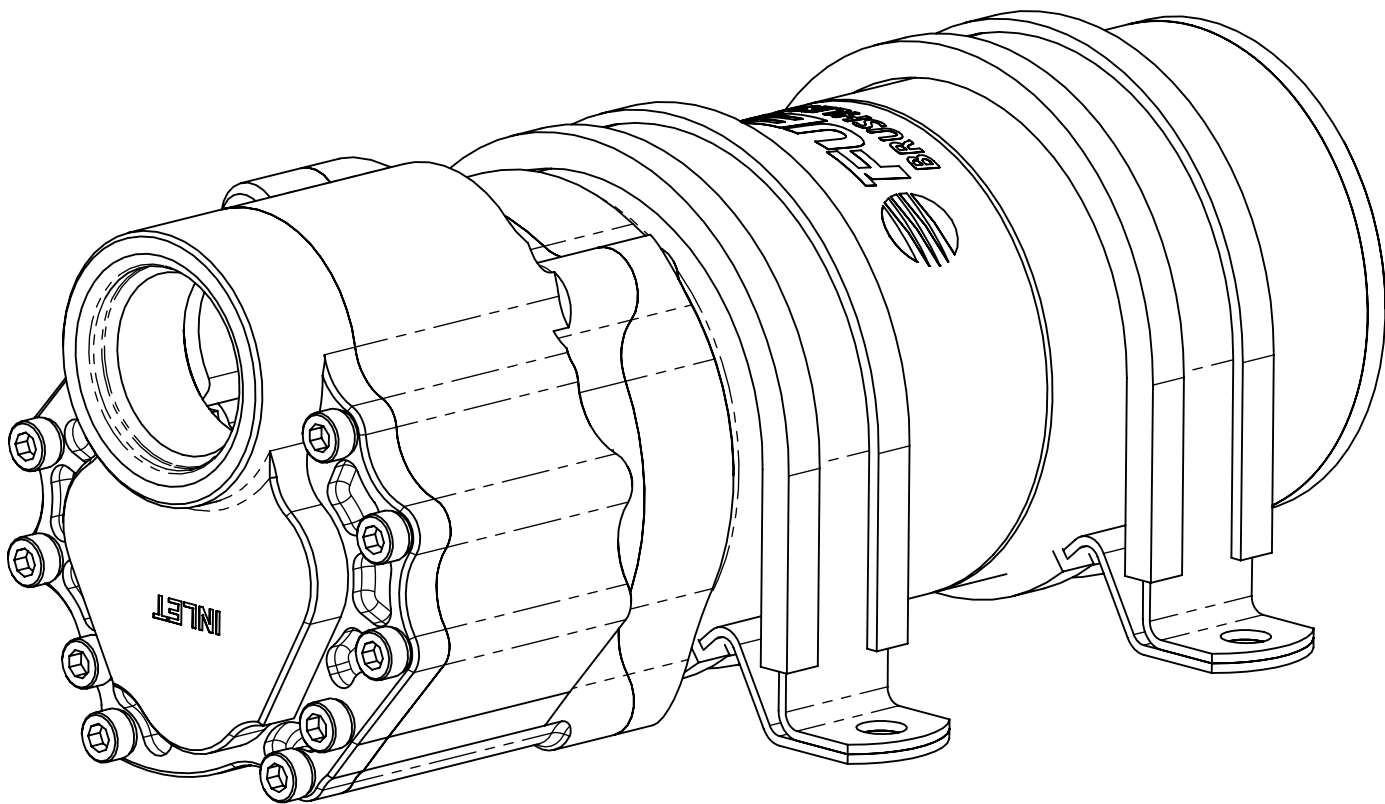
- METHANOL

- ETHANOL (INCLUDING E85)

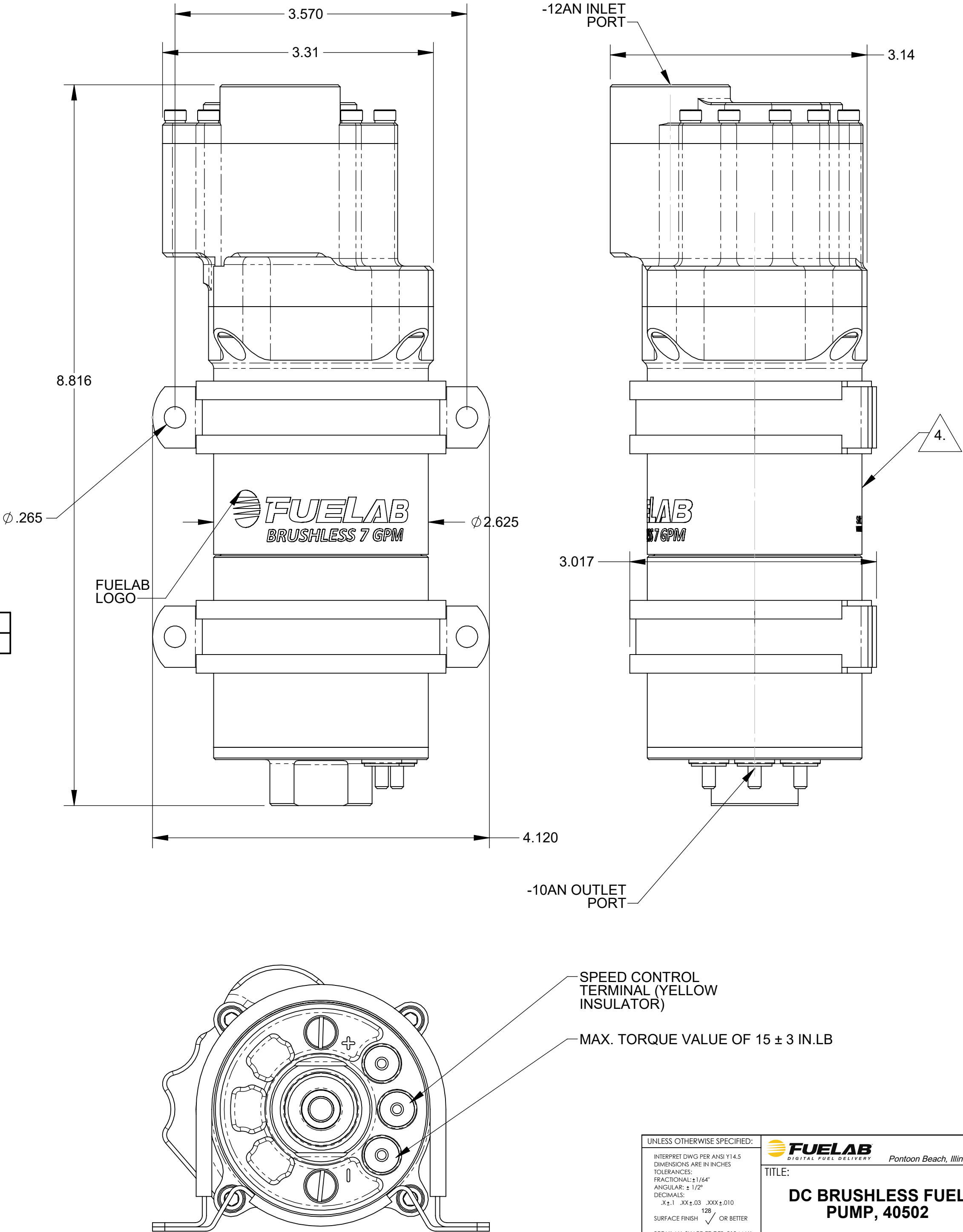
- DIESEL
4. UNIQUE SERIAL NUMBER DOES NOT CONTAIN DIRECT INFORMATION IN DETERMINING MODEL NUMBER. CONTACT FUELAB FOR DETERMINATION OF MODEL NUMBER BASED ON SERIAL NUMBER.
5. PORT O-RINGS, SADDLE CLAMPS, INSTRUCTIONS CARD AND PERFORMANCE CERTIFICATION INCLUDED, BAGGED SEPARATELY FROM PUMP.
6. 8-24 VOLT OPERATING RANGE, USE BETWEEN 12 VOLT TO 24 VOLT (6 TO 12 CELL LEAD ACID BATTERY) VEHICLE SYSTEMS WITH OR WITHOUT CHARGING SYSTEM.
7. PUMP REQUIRES BYPASS REGULATOR OR RELIEF VALVE TO AVOID OVER-PRESSURE OPERATING CONDITION.
8. SEE TABLE BELOW FOR DETERMINATION OF DESIRED MODEL NUMBER.
9. REFERENCE DRAWING 1100210A1 FOR ASSEMBLY INSTRUCTIONS.

MODEL SELECTION TABLE

MODEL	FLOW RATING, AT 13.5v	FLOW RATING, AT 13.5v	MAX. PRESSURE
40502	7 GPM AT 45 PSI	1590 LPH AT 3.0 BAR	95 PSI (6.5 BAR)



ISOMETRIC VIEW



UNLESS OTHERWISE SPECIFIED:

INTERPRET DWG PER ANSI Y14.5

DIMENSIONS ARE IN INCHES

TOLERANCES:

FRACTIONAL: ±1/64"

ANGULAR: ± 1/2°

DECIMALS:

X ± .1

.XX ± .03

.XXX ± .010

SURFACE FINISH

128

OR BETTER

BREAK ALL SHARP EDGES .010 MAX

REMOVE ALL BURRS

THIRD ANGLE PROJECTION

DO NOT SCALE DRAWING

FUELAB

DIGITAL FUEL DELIVERY

 Pontoon Beach, Illinois

TITLE:

DC BRUSHLESS FUEL PUMP, 40502

SIZE

C

DWG. NO.

110022000

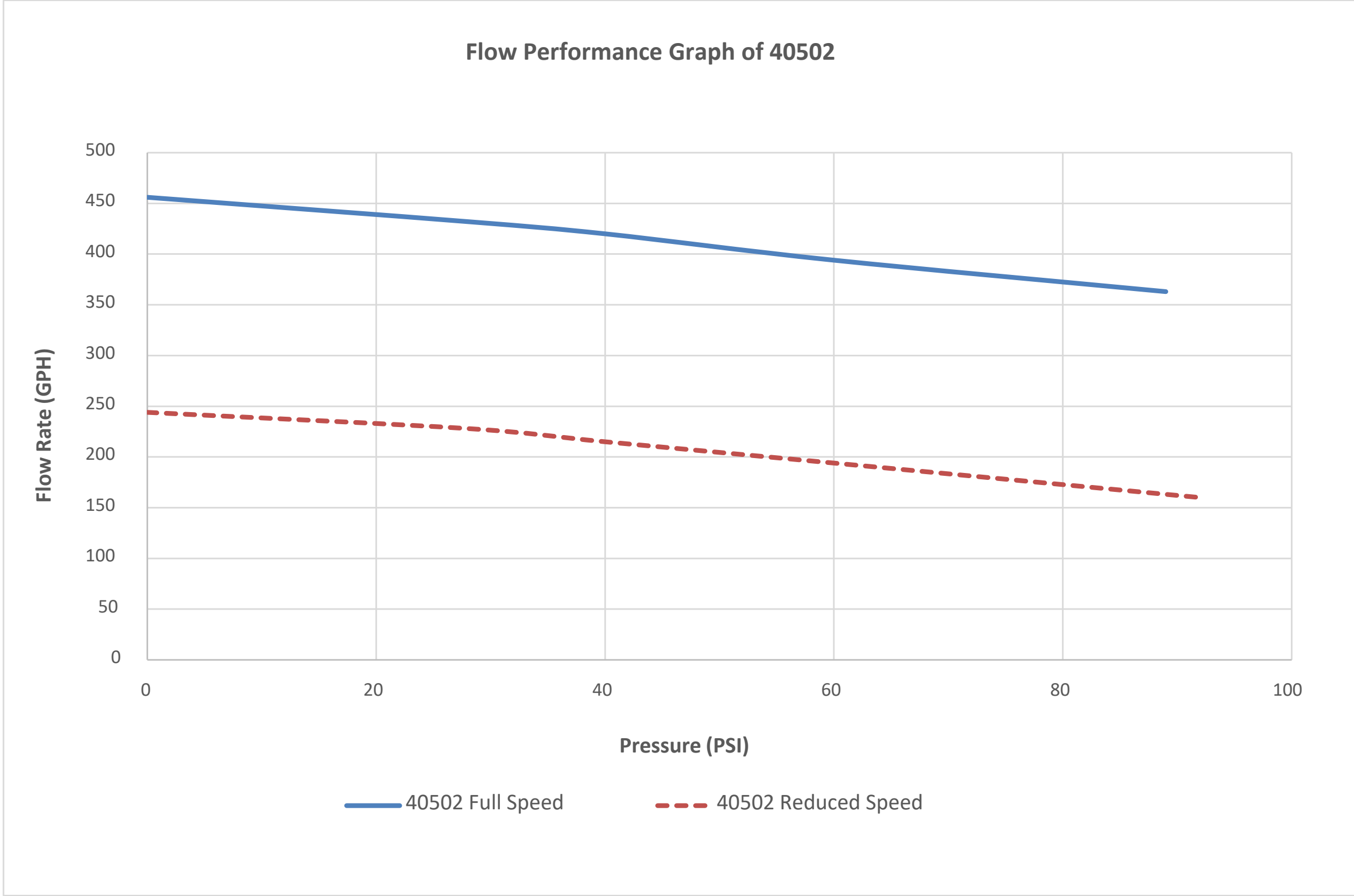
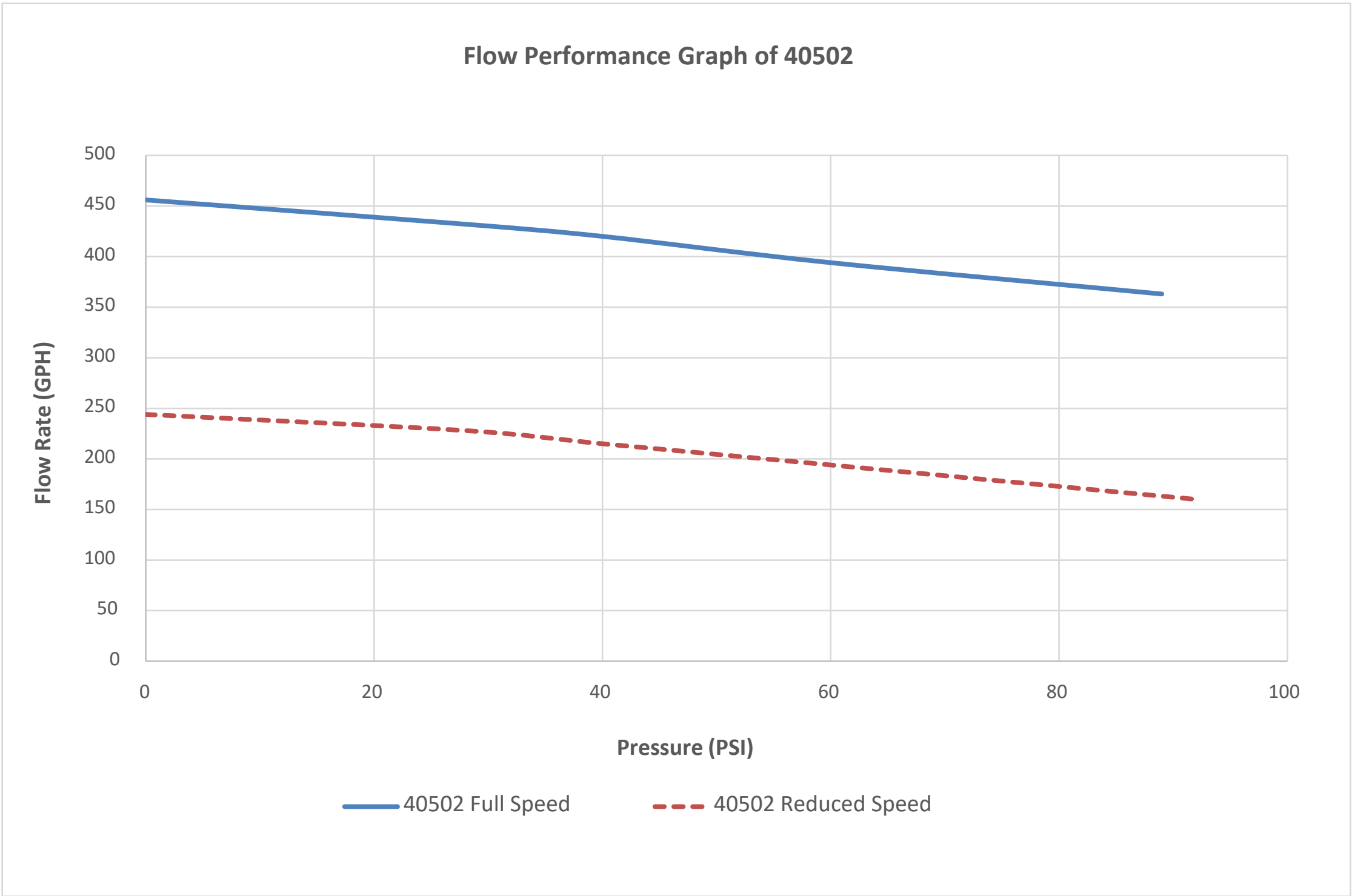
REV


B

SCALE: 1/1

WEIGHT: LBS

SHEET: 1 OF 2



UNLESS OTHERWISE SPECIFIED: INTERPRET DWG PER ANSI Y14.5 DIMENSIONS ARE IN INCHES TOLERANCES: FRACTIONAL: ±1/64" ANGULAR: ± 1/2° DECIMALS: X ± .1 .XX ± .03 .XXX ± .010 SURFACE FINISH 128 ✓ OR BETTER BREAK ALL SHARP EDGES .010 MAX REMOVE ALL BURRS		 <i>Pontoon Beach, Illinois</i>	
TITLE: DC BRUSHLESS FUEL PUMP, 40502			
SIZE C	DWG. NO. 110022000	REV B	
SCALE: 1/1	WEIGHT: LBS	SHEET: 2 OF 2	

DO NOT SCALE DRAWING

THIRD ANGLE PROJECTION