

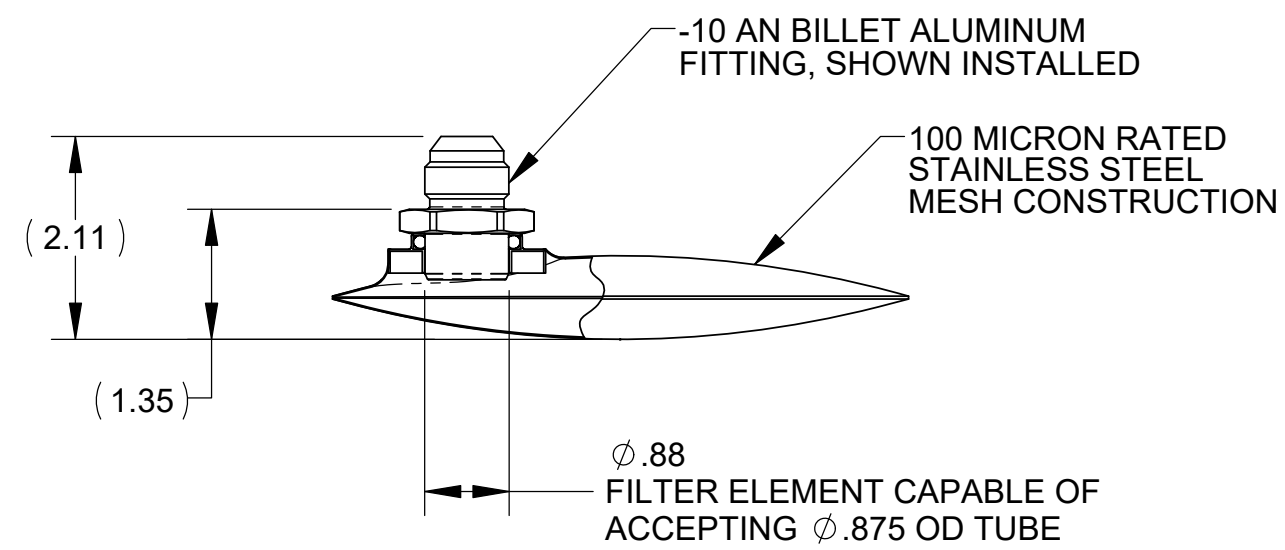
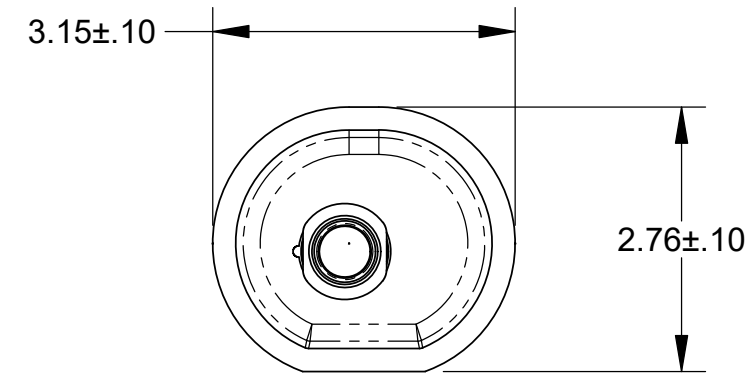
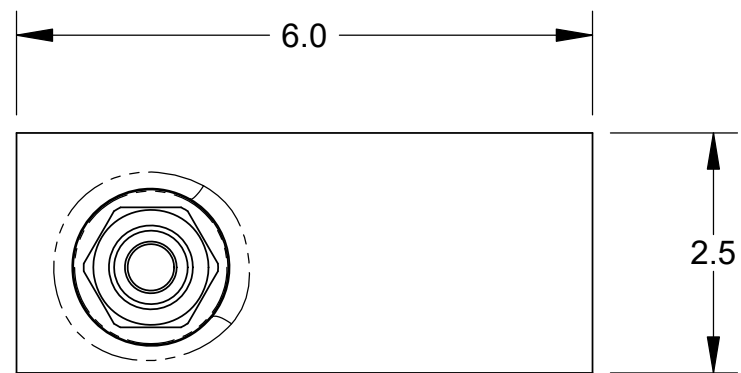
NOTES:

1. THIS DRAWING DESCRIBES THE FUELAB 838xx SERIES IN-TANK FUEL STRAINING FILTERS.
2. FEATURES DESCRIBED PER MODEL SELECTION TABLE, BELOW.
3. BILLET ALUMINUM FITTING AND BOSS SEAL O-RING INCLUDED, BAGGED SERPARATELY.
4. REFERENCE DRAWING 1080203A1 FOR ASSEMBLY INSTRUCTIONS.

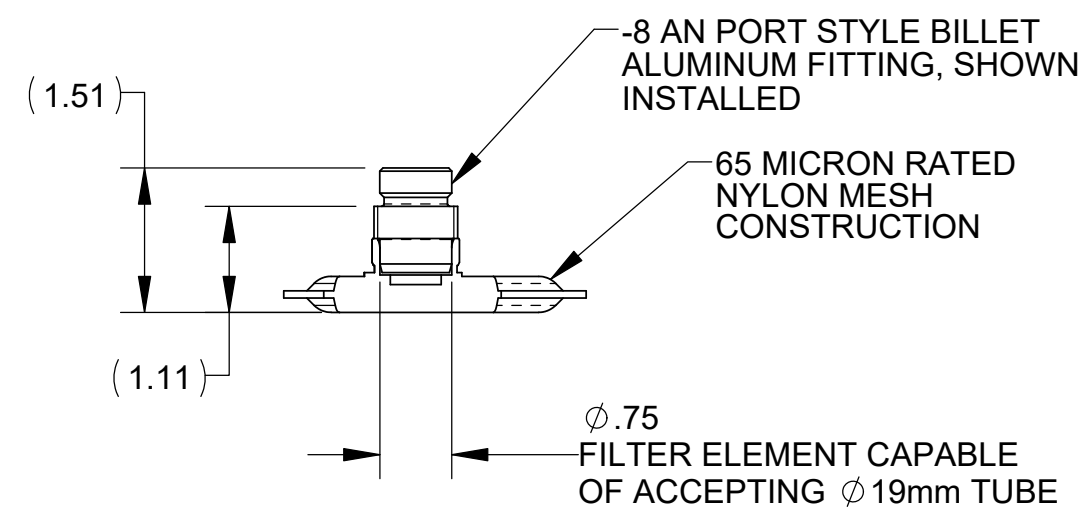
2.

MODEL SELECTION TABLE


MODEL	MATERIAL DESCRIPTION	RATED FLOW RATE	MALE AN PORT SIZE	FLUID COMPATIBILITY
83801	AL ALY / STAINLESS STEEL FILTER	250 GPH	-10AN WITH 37° FLARE	METHANOL, ETHANOL, DIESEL, GASOLINE (PUMP AND RACE)
83811	AL ALY / NYLON MESH FILTER	140 GPH	-8AN PORT STYLE - NO FLARE	ETHANOL, DIESEL, GASOLINE (PUMP AND RACE)



PARTIAL SECTION VIEW OF CONTENTS,
MODEL 83801 SHOWN ABOVE



PARTIAL SECTION VIEW OF CONTENTS,
MODEL 83811 SHOWN ABOVE

UNLESS OTHERWISE SPECIFIED: INTERPRET DWG PER ANSI Y14.5 DIMENSIONS ARE IN INCHES TOLERANCES: FRACTIONAL: ±1/64" ANGULAR: ±1/2° DECIMALS: X±1 XX±03 XXX±010 SURFACE FINISH 128 OR BETTER BREAK ALL SHARP EDGES .010 MAX REMOVE ALL BURRS		 Collinsville, Illinois	
TITLE: FILTER, IN-TANK, 838xx SERIES			
SIZE C	DWG. NO. 108020300	REV C	
SCALE: 2/1	WEIGHT:	SHEET: 1 OF 1	